

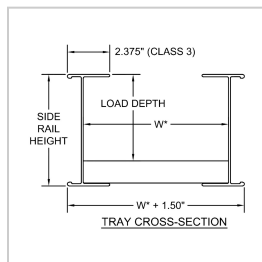
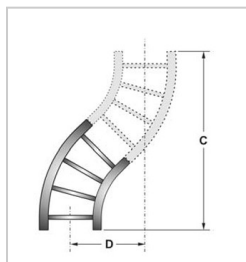
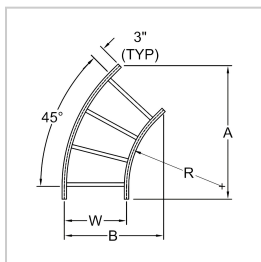
Product Overview

This bend provides a 45° change of direction when connecting straight cable tray sections, maintaining continuous cable support and routing through the turn.

- Extruded aluminum alloy 6063 construction
- Ladder-style design with two side rails
- 1.13" wide tubular rungs, arc-welded on both sides
- Class 3 fitting with 2.375" flanges
- 3" flat side rail tangents beyond the curvature
- Each section includes splice plates and fastening hardware
- Splice resistance less than 0.00033 ohms
- UL Classified as an equipment grounding conductor per NEC 392
- Compliant with NEMA VE1, CSA C22.2 No. 126, and NEC Article 392
- Matching covers listed below



Additional Images



Product Family

SKU	Width (W)	Type	Pairs With	Bend Radius (R)	Footprint (AxB)	Offset (CxD)	Weight
LT-C45-06-4D	6"	Tray	LT-V45-06-A	12" at 45°	17-7/8" x 11-5/8"	31-1/2" x 13"	2.00
LT-C45-09-4D	9"	Tray	LT-V45-09-A	12" at 45°	20" x 14-5/8"	33-5/8" x 13-7/8"	2.50
LT-C45-12-4D	12"	Tray	LT-V45-12-A	12" at 45°	22-1/8" x 17-5/8"	35-3/4" x 14-3/4"	3.00
LT-C45-18-4D	18"	Tray	LT-V45-18-A	12" at 45°	26-3/8" x 23-5/8"	40" x 16-1/2"	4.00
LT-C45-24-4D	24"	Tray	LT-V45-24-A	12" at 45°	30-5/8" x 29-5/8"	44-1/8" x 18-1/4"	5.00
LT-V45-06-A	6"	Cover	LT-C45-06-4D	-	-	-	1.00
LT-V45-09-A	9"	Cover	LT-C45-09-4D	-	-	-	1.00
LT-V45-12-A	12"	Cover	LT-C45-12-4D	-	-	-	1.25
LT-V45-18-A	18"	Cover	LT-C45-18-4D	-	-	-	1.95
LT-V45-24-A	24"	Cover	LT-C45-24-4D	-	-	-	2.75