



Polymer Cable Support Bars for Superior PIM Mitigation

PIM Shield® Polymer Cable Support Bars are engineered to maximize PIM mitigation. By using polymer components at both the support bar and the pole attachment points, the system helps reduce common sources of unwanted signal interference over time. The result is a support solution that lowers PIM risk while keeping cable routing clean and consistent.



PIM Reduced by Design

The polymer bar and pole-mount clamp are designed to minimize metal-to-metal contact at the mounting interface, thereby reducing common PIM contributors at the point where the support hardware meets the pole.



Pair with Gen 2 Snap-Ins to Optimize PIM Mitigation Performance

Gen 2 Snap-ins snap easily into the bar's molded holes to create a fully non-metallic cable-retention interface, eliminating metal clips, straps, or contact surfaces at the cable attachment points.



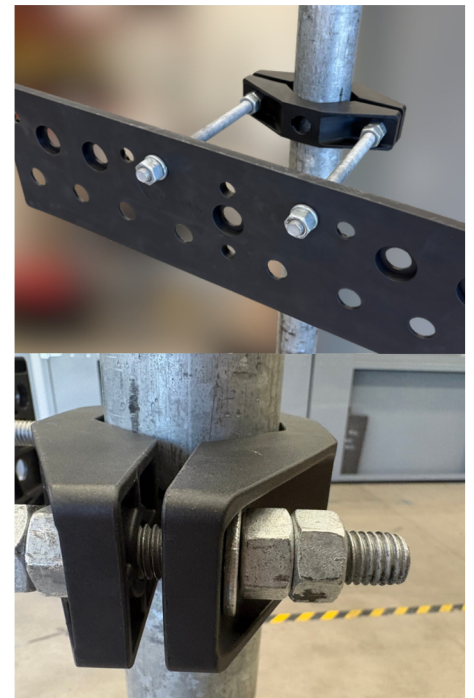
Stays Stable Under Wind & Vibration

PIM issues often manifest later, when hardware shifts or loosens over time. The kit is designed to maintain a consistent position, helping reduce micro-motion at the mount interface, which can cause interference over time.



Consistent Cable Separation & Cleaner Routing

When jumpers are kept consistently spaced and firmly retained, there is less chance of rubbing, chattering, or unintended contact with nearby metal that can introduce PIM contributors. The bar layout supports repeatable placement so installs stay clean through adds, swaps, and sector upgrades.



The polymer bar and polymer pole-mount clamp create a non-metallic interface at the pole, helping reduce common PIM contributors from support hardware.

Polymer Cable Support Bars With Polymer Pole Clamps

PRODUCT OVERVIEW



Product Family & Related Parts

Below, you will find a listing of all parts belonging to this family

Product Family

SKU	Name	Range	Positions
902053-01	Standard Polymer Cable Support Bar & Clamps	10"	13
902053-02	Extended Range Polymer Cable Support Bar & Clamps	18"	13
902055-02-3	Extended Range Polymer Cable Support Bar & Clamps (3-Pack)	18"	26