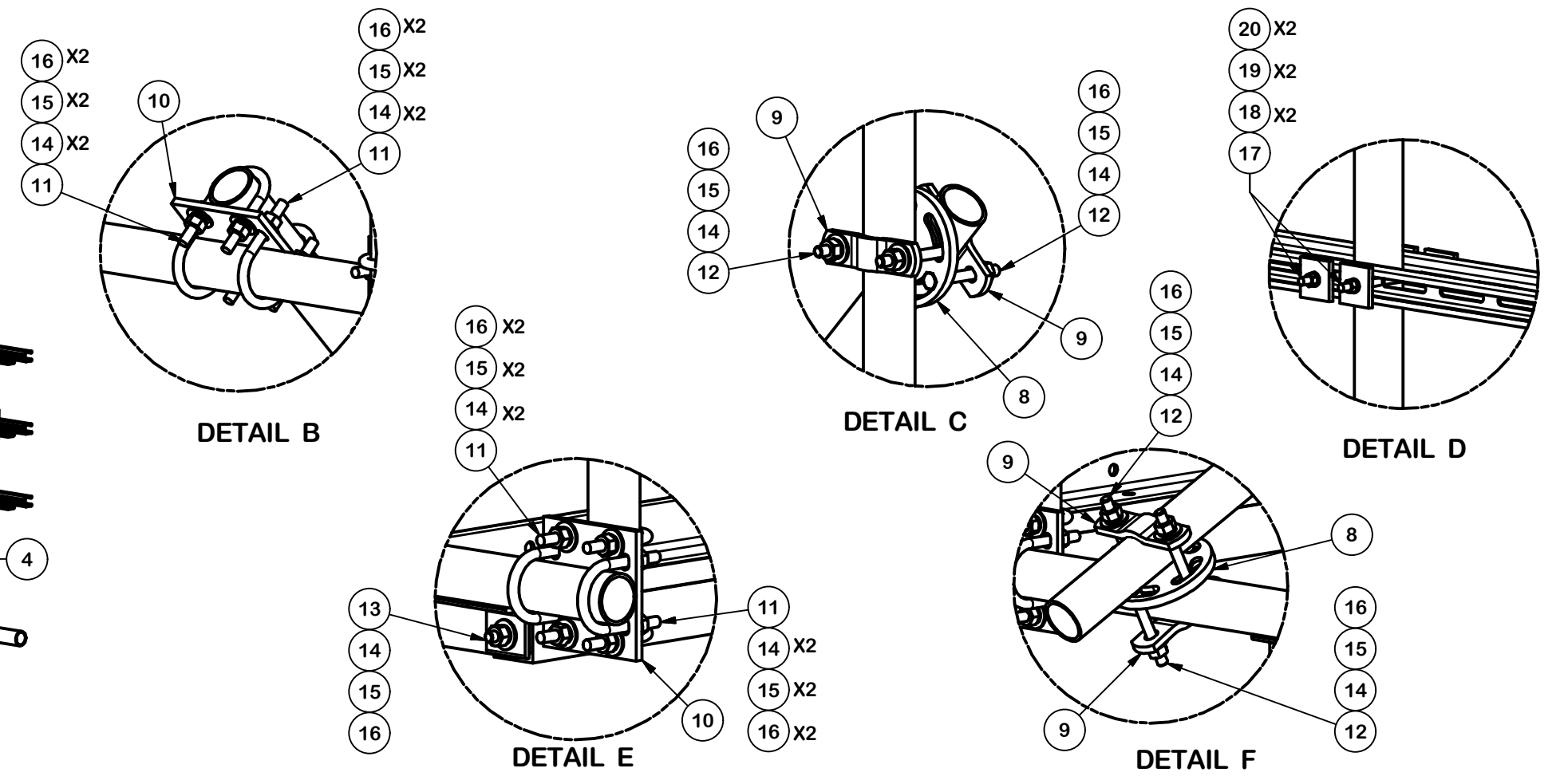

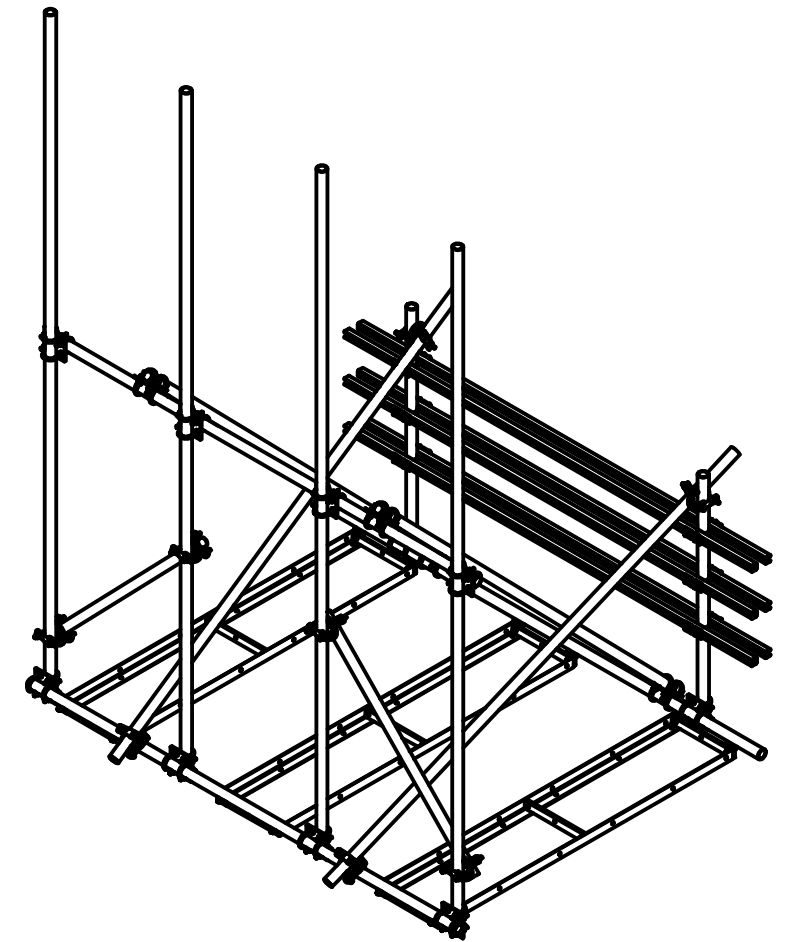
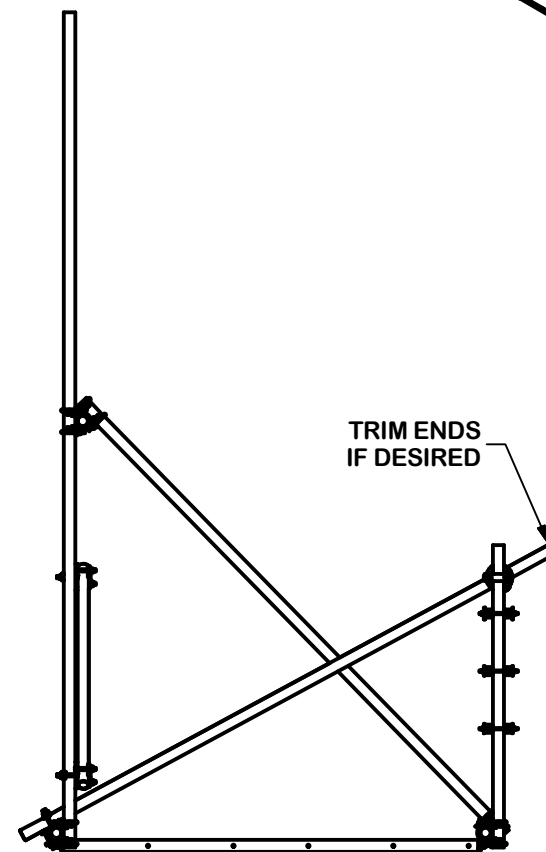
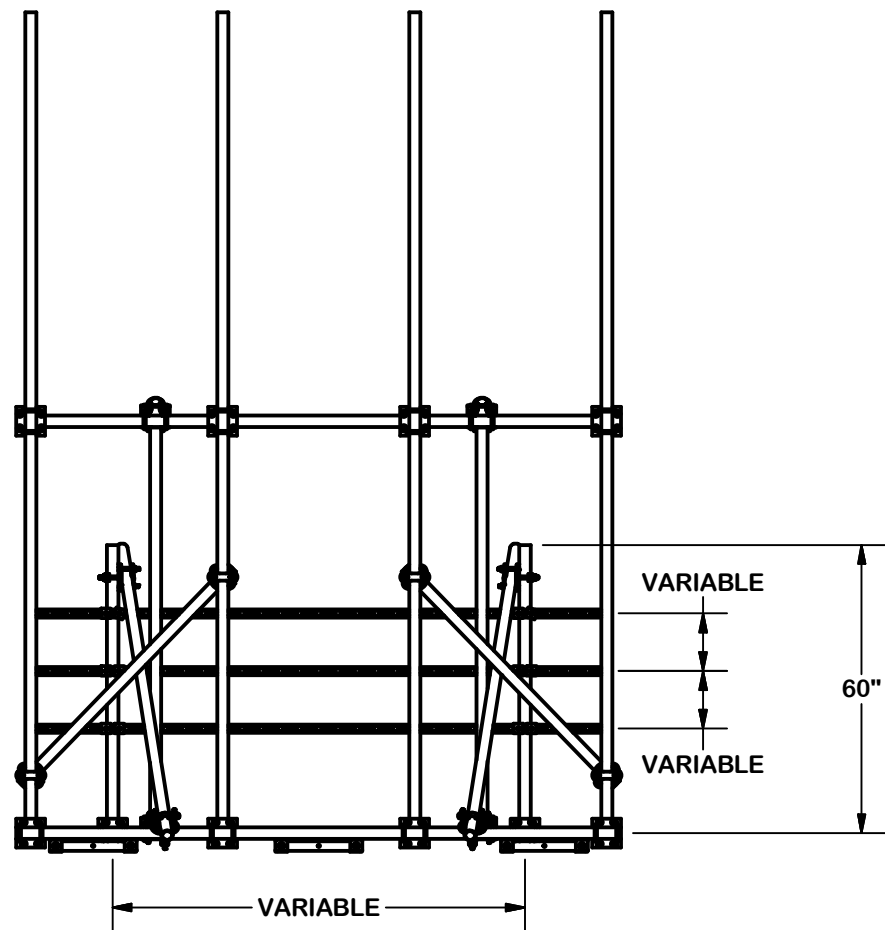
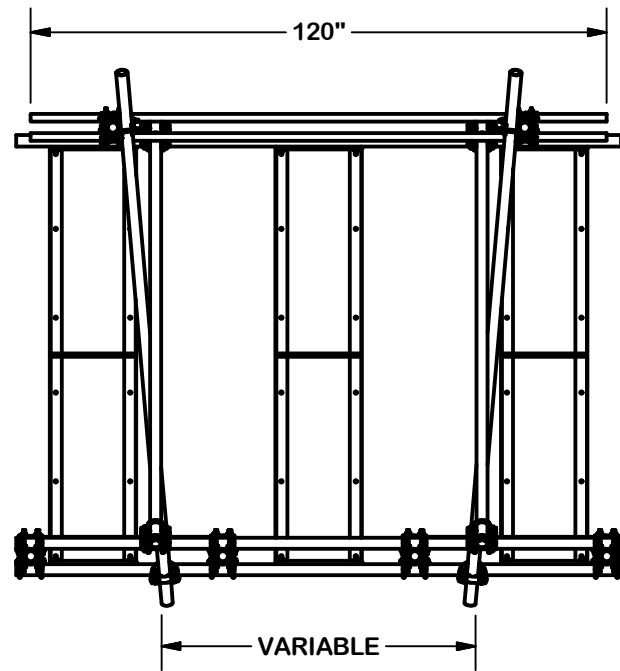


PARTS LIST						
ITEM	QTY	PART NO.	PART DESCRIPTION	LENGTH	UNIT WT.	NET WT.
1	4	P2174	2-3/8" OD X 174" SCH 40 GALVANIZED PIPE	174 in	55.75	222.98
3	5	P2126	2-3/8" X 126" (2" SCH. 40) GALVANIZED PIPE	126 in	40.75	203.76
4	4	P263	2-3/8" X 63"SCH 40 GALVANIZED PIPE	63 in	20.18	80.74
5	3	X-232696	BALLAST TRAY WELDMENT - SITE PRO 1		66.60	199.79
6	2	X-RTP10	FRONT AND BACK HORIZONTAL TRAY SUPPORT WELDMENT		44.81	89.61
7	6	UNT10	UNISTRUT	120 in	20.38	122.27
8	8	X-127594	FLAT DISK CLAMP PLATE 4" CENTERS (GALV.)		2.51	20.05
9	16	X-100064	CLAMP (4" V-CLAMP) GALVANIZED		0.92	14.75
10	14	SCX1	CROSSOVER PLATE 2-3/8" X 2-3/8"	6 in	3.71	51.92
11	56	X-UB1212	1/2" X 2-1/2" X 4-1/2" X 2" U-BOLT (HDG.)		0.63	35.01
12	32	G1204	1/2" x 4" HDG HEX BOLT GR5 FULL THREAD	4 in	0.27	8.64
13	12	G1202	1/2" x 2" HDG HEX BOLT GR5	2 in	0.18	2.11
14	156	G12FW	1/2" HDG USS FLATWASHER	3/32 in	0.03	5.32
15	156	G12LW	1/2" HDG LOCKWASHER	1/8 in	0.01	2.17
16	156	G12NUT	1/2" HDG HEAVY 2H HEX NUT		0.07	11.17
17	12	SS38R-8	3/8" X 8" THREADED ROD (STAINLESS STEEL)		0.25	3.01
18	24	SQW38	3/8" SQUARE WASHER	2 in	0.29	6.94
19	24	SS38LW	3/8" SS LOCKWASHER		0.01	0.16
20	24	SS38NUT	3/8" SS HEX NUT		0.02	0.44
					TOTAL WT. #	1080.85



					<b>TOLERANCE NOTES</b>  TOLERANCES ON DIMENSIONS, UNLESS OTHERWISE NOTED ARE: SAWED, SHEARED AND GAS CUT EDGES (± 0.030") DRILLED AND GAS CUT HOLES (± 0.030") - NO CONING OF HOLES LASER CUT EDGES AND HOLES (± 0.010") - NO CONING OF HOLES BENDS ARE ± 1/2 DEGREE ALL OTHER MACHINING (± 0.030") ALL OTHER ASSEMBLY (± 0.060")			<div>DESCRIPTION</div> <div>3 LEVEL RRU / EQUIPMENT RACK FOR RTP FRAMES</div>			<div><div><div><div>SITE PRO</div><div>1</div></div><div>A valmont  COMPANY</div></div><div>Locations: New York, NY Atlanta, GA Los Angeles, CA Plymouth, IN Salem, OR Dallas, TX</div><div>Engineering Support Team: 1-888-753-7446</div></div>				
A	SWAPPED OUT P1126 WITH P2126				JFS	3/16/2022	CPD NO.		DRAWN BY CEK 4/23/2015		ENG. APPROVAL		PART NO. RTP10-3RRU		1 OF 3 PAGE
REV	DESCRIPTION OF REVISIONS				CPD	BY	DATE	CLASS 81	SUB 01	DRAWING USAGE CUSTOMER		CHECKED BY BMC 4/24/2015		DWG. NO. RTP10-3RRU	
REVISION HISTORY							PROPRIETARY NOTE: THE DATA AND TECHNIQUES CONTAINED IN THIS DRAWING ARE PROPRIETARY INFORMATION OF VALMONT INDUSTRIES AND CONSIDERED A TRADE SECRET. ANY USE OR DISCLOSURE WITHOUT THE CONSENT OF VALMONT INDUSTRIES IS STRICTLY PROHIBITED.								



### TOLERANCE NOTES

TOLERANCES ON DIMENSIONS, UNLESS OTHERWISE NOTED ARE:  
SAWED, SHEARED AND GAS CUT EDGES ( $\pm 0.030''$ )  
DRILLED AND GAS CUT HOLES ( $\pm 0.030''$ ) - NO CONING OF HOLES  
LASER CUT EDGES AND HOLES ( $\pm 0.010''$ ) - NO CONING OF HOLES  
BENDS ARE  $\pm 1/2$  DEGREE  
ALL OTHER MACHINING ( $\pm 0.030''$ )  
ALL OTHER ASSEMBLY ( $\pm 0.060''$ )

PROPRIETARY NOTE:  
THE DATA AND TECHNIQUES CONTAINED IN THIS DRAWING ARE PROPRIETARY INFORMATION OF VALMONT INDUSTRIES AND CONSIDERED A TRADE SECRET. ANY USE OR DISCLOSURE WITHOUT THE CONSENT OF VALMONT INDUSTRIES IS STRICTLY PROHIBITED.

DESCRIPTION  
**3 LEVEL  
RRU / EQUIPMENT RACK  
FOR RTP FRAMES**

CPD NO.		DRAWN BY <b>CEK 4/23/2015</b>		ENG. APPROVAL	
CLASS <b>81</b>	SUB <b>01</b>	DRAWING USAGE <b>CUSTOMER</b>		CHECKED BY <b>BMC 4/24/2015</b>	

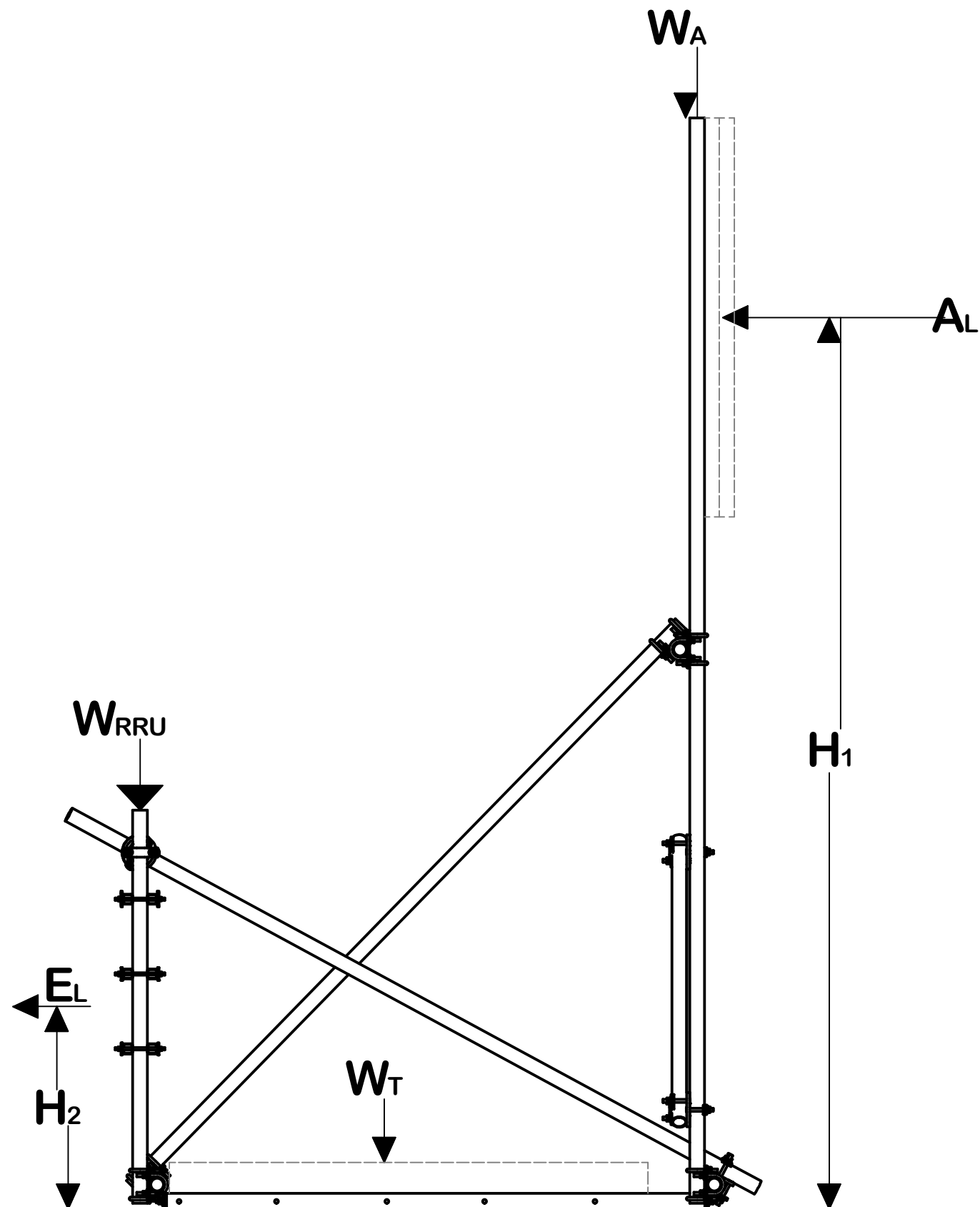
**SITE PRO 1**  
A valmont COMPANY

Locations:  
New York, NY  
Atlanta, GA  
Los Angeles, CA  
Plymouth, IN  
Salem, OR  
Dallas, TX

Engineering  
Support Team:  
1-888-753-7446

PART NO.	<b>RTP10-3RRU</b>	PAGE 2 OF 3
DWG. NO.	<b>RTP10-3RRU</b>	

# RTP FRAMES & RTP-RRU BALLAST EQUATIONS



BALLAST EQUATION WITH 1.5 SAFETY FACTOR:

$$\text{FRONT WIND} = W_T = \frac{(((A_L * H_1) + (E_L * H_2)) * 1.5) - (W_A * 7.25)}{3.625}$$

$$\text{BACK WIND} = W_T = \frac{(((A_L * H_1) + (-E_L * H_2)) * 1.5) - (W_{RRU} * 7.25)}{3.625}$$

BALLAST EQUATION WITH REV. G LOADING:

$$\text{FRONT WIND} = W_T = \frac{(((A_L * H_1) + (E_L * H_2)) * 1.6) - (W_A * 7.25)}{3.625 (0.9)}$$

$$\text{BACK WIND} = W_T = \frac{(((A_L * H_1) + (-E_L * H_2)) * 1.6) - (W_{RRU} * 7.25)}{3.625 (0.9)}$$

$$W = W_T / 3$$

E <sub>L</sub>	= EQUIPMENT LOAD (NON-FACTORED)	lbs
A <sub>L</sub>	= ANTENNA LOAD (NON-FACTORED)	lbs
H <sub>1</sub> & H <sub>2</sub>	= HEIGHT FROM ROOFTOP	ft
W <sub>T</sub>	= TOTAL BALLAST WEIGHT	lbs
W	= BALLAST WEIGHT PER TRAY	lbs
W <sub>RRU</sub>	= 200 + EQUIPMENT WEIGHT	lbs
W <sub>A</sub>	= 260 + ANTENNA WEIGHT	lbs

## TOLERANCE NOTES

TOLERANCES ON DIMENSIONS, UNLESS OTHERWISE NOTED ARE:  
SAWED, SHEARED AND GAS CUT EDGES (± 0.030")  
DRILLED AND GAS CUT HOLES (± 0.030") - NO CONING OF HOLES  
LASER CUT EDGES AND HOLES (± 0.010") - NO CONING OF HOLES  
BENDS ARE ± 1/2 DEGREE  
ALL OTHER MACHINING (± 0.030")  
ALL OTHER ASSEMBLY (± 0.060")

PROPRIETARY NOTE:  
THE DATA AND TECHNIQUES CONTAINED IN THIS DRAWING ARE PROPRIETARY INFORMATION OF VALMONT INDUSTRIES AND CONSIDERED A TRADE SECRET. ANY USE OR DISCLOSURE WITHOUT THE CONSENT OF VALMONT INDUSTRIES IS STRICTLY PROHIBITED.

DESCRIPTION

3 LEVEL  
RRU / EQUIPMENT RACK  
FOR RTP FRAMES

CPD NO.

DRAWN BY

CEK 4/23/2015

ENG. APPROVAL

CLASS

SUB

DRAWING USAGE

CUSTOMER

CHECKED BY

BMC 4/24/2015

PART NO.

RTP10-3RRU

DWG. NO.

RTP10-3RRU



Engineering  
Support Team:  
1-888-753-7446

Locations:  
New York, NY  
Atlanta, GA  
Los Angeles, CA  
Plymouth, IN  
Salem, OR  
Dallas, TX