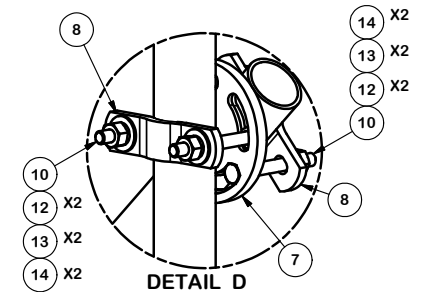
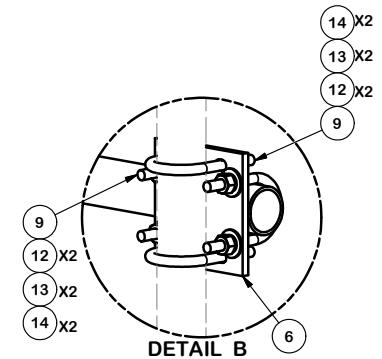
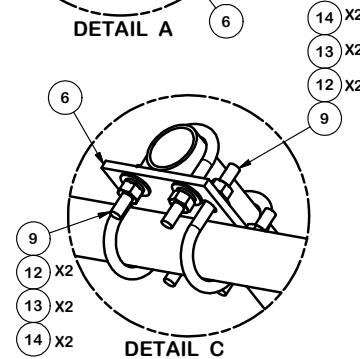
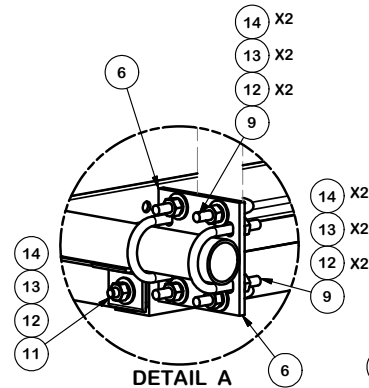


#### NOTES:

1. SEE SHEET 2 FOR BALLAST LOADING FORMULA.
2. THE MOUNTING FRAME IS DESIGNED TO ACCEPT A MAXIMUM OF FOUR ANTENNA MOUNTS.
3. CONCRETE BLOCKS (CMU), 4x8x16 OR 8x8x16, ARE TYPICALLY USED FOR BALLAST.
4. AN OPTIONAL TIE-DOWN ASSEMBLY, PART# BHD-K, IS AVAILABLE, ORDER SEPERATELY.
5. AN OPTIONAL ROOF PROTECTION MAT, PART# MAT18 IS RECOMMENDED, MATS ARE 1/2"x18"x48" AND 8 REQUIRED PER FRAME. ORDER SEPERATELY.

2-3/8" O.D. VERTICAL MOUNTING PIPES					
ASSEMBLY NO.	PART "A"	LENGTH "B"	UNIT WT. "C"	NET WT. "D"	TOTAL WEIGHT
RTP	PIPE NOT INCLUDED, ONLY CONNECTION HDW.				643.88
RTP12-496	P296	96"	30.76	123.04	766.92
RTP12-4126	P2126	126"	40.37	161.48	805.36

PARTS LIST						
ITEM	QTY	PART NO.	PART DESCRIPTION	LENGTH	UNIT WT.	NET WT.
1	4	X-232696	BALLAST TRAY WELDMENT - SITE PRO 1		66.60	266.39
2	2	X-RTP12	FRONT AND BACK HORIZONTAL TRAY SUPPORT WELDMENT		53.92	107.84
3	2	P272	2-3/8" X 72" SCH 40 GALVANIZED PIPE	72"	23.07	46.13
4	2	P2126	2-3/8" X 126" (2" SCH. 40) GALVANIZED PIPE	126"	40.75	81.50
5	1	P2150	2-3/8" O.D. X 150" SCH 40 GALVANIZED PIPE	150.0000 in	45.77	45.77
6	12	SCX1	CROSSOVER PLATE 2-3/8" X 2-3/8"	6	3.71	44.50
7	4	X-127594	FLAT DISK CLAMP PLATE 4" CENTERS (GALV.)		2.51	10.03
8	8	X-100064	CLAMP (4" V-CLAMP) GALVANIZED		0.92	7.37
9	48	X-UB1212	1/2" X 2-1/2" X 4-1/2" X 2" U-BOLT (HDG.)		0.63	30.01
10	16	G1204	1/2" x 4" HDG HEX BOLT GR5 FULL THREAD	4	0.27	4.32
11	16	G1202	1/2" x 2" HDG HEX BOLT GR5	2	0.18	2.81
12	128	G12FW	1/2" HDG USS FLATWASHER	0.095	0.03	4.36
13	128	G12LW	1/2" HDG LOCKWASHER	.125	0.01	1.78
14	128	G12NUT	1/2" HDG HEAVY 2H HEX NUT		0.07	9.17
15	4	A	2-3/8" O.D. SCH. 40 PIPE	B	C	D



#### TOLERANCE NOTES

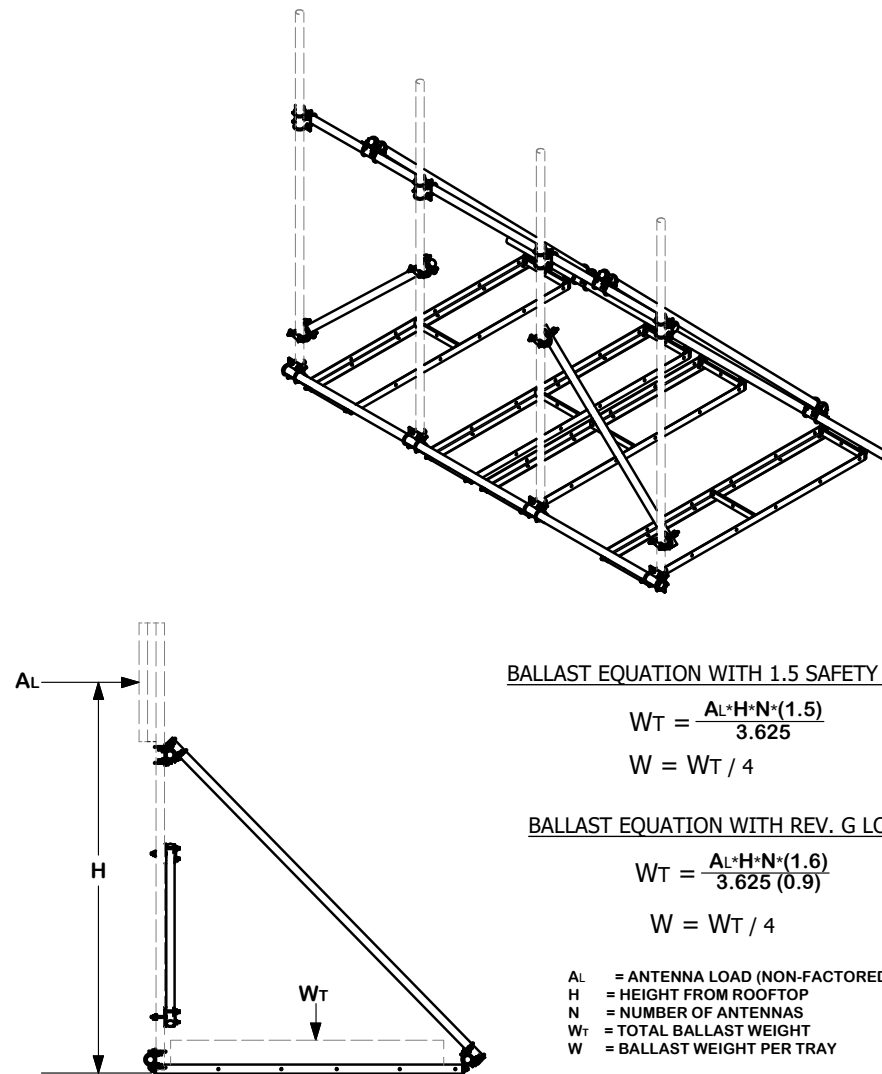
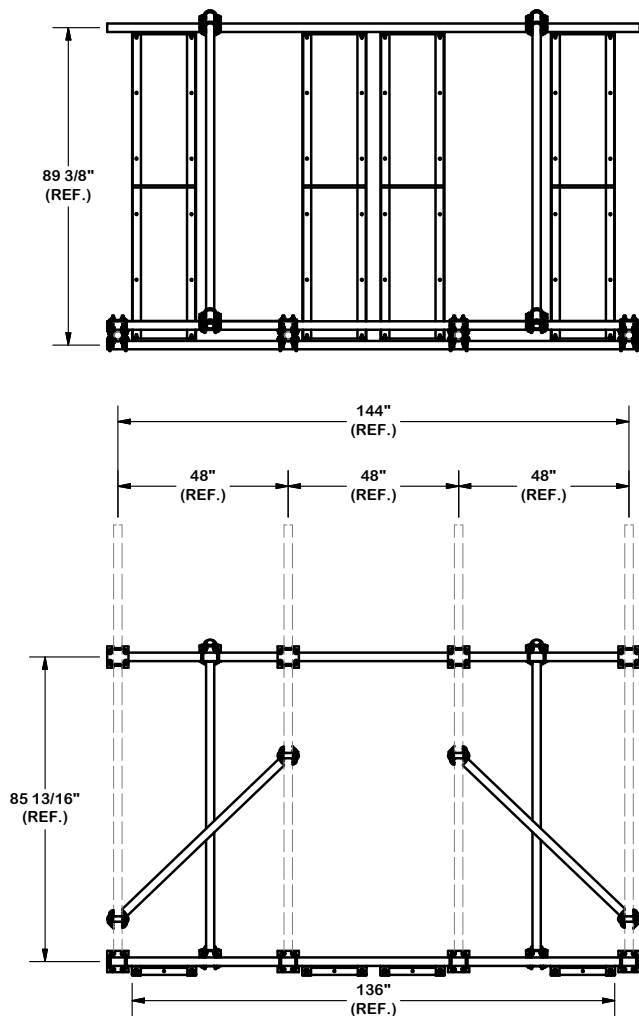
TOLERANCES ON DIMENSIONS, UNLESS OTHERWISE NOTED ARE:  
 SAWED, SHEARED AND GAS CUT EDGES ( $\pm 0.030"$ )  
 DRILLED AND GAS CUT HOLES ( $\pm 0.030"$ ) - NO CONING OF HOLES  
 LASER CUT EDGES AND HOLES ( $\pm 0.010"$ ) - NO CONING OF HOLES  
 BENDS ARE  $\pm 1/2$  DEGREE  
 ALL OTHER MACHINING ( $\pm 0.030"$ )  
 ALL OTHER ASSEMBLY ( $\pm 0.060"$ )

PROPRIETARY NOTE:  
 THE DATA AND TECHNIQUES CONTAINED IN THIS DRAWING ARE PROPRIETARY INFORMATION OF VALMONT INDUSTRIES AND CONSIDERED A TRADE SECRET. ANY USE OR DISCLOSURE WITHOUT THE CONSENT OF VALMONT INDUSTRIES IS STRICTLY PROHIBITED.

DESCRIPTION			
12' ROOFTOP PIPE FRAME			
CPD NO.	DRAWN BY	ENG. APPROVAL	
	CEK	1/2/2015	
CLASS	SUB	DRAWING USAGE	CHECKED BY
81	02	CUSTOMER	BMC 4/13/2022

<b>SITE PRO 1</b> Engineering Support Team: 1-888-753-7446		Locations: New York, NY Atlanta, GA Los Angeles, CA Plymouth, IN Salem, OR Dallas, TX
PART NO.		SEE ASSEMBLY NO.
DWG. NO.		RTP12

A	UPDATED P/N'S IN CHART TO RTP12-496 & RTP12-4126	CEK	4/13/2022
REV	DESCRIPTION OF REVISIONS	CPD	BY DATE
REVISION HISTORY			



BALLAST EQUATION WITH 1.5 SAFETY FACTOR:

$$W_T = \frac{A_L \cdot H \cdot N \cdot (1.5)}{3.625}$$

$$W = W_T / 4$$

BALLAST EQUATION WITH REV. G LOADING:

$$W_T = \frac{A_L \cdot H \cdot N \cdot (1.6)}{3.625 (0.9)}$$

$$W = W_T / 4$$

A<sub>L</sub> = ANTENNA LOAD (NON-FACTORED)      lbs  
 H = HEIGHT FROM ROOFTOP      ft  
 N = NUMBER OF ANTENNAS  
 W<sub>T</sub> = TOTAL BALLAST WEIGHT      lbs  
 W = BALLAST WEIGHT PER TRAY      lbs

#### TOLERANCE NOTES

TOLERANCES ON DIMENSIONS, UNLESS OTHERWISE NOTED ARE:  
 SAWED, SHEARED AND GAS CUT EDGES ( $\pm 0.030"$ )  
 DRILLED AND GAS CUT HOLES ( $\pm 0.030"$ ) - NO CONING OF HOLES  
 LASER CUT EDGES AND HOLES ( $\pm 0.010"$ ) - NO CONING OF HOLES  
 BENDS ARE  $\pm 1/2$  DEGREE  
 ALL OTHER MACHINING ( $\pm 0.030"$ )  
 ALL OTHER ASSEMBLY ( $\pm 0.060"$ )

PROPRIETARY NOTE:  
 THE DATA AND TECHNIQUES CONTAINED IN THIS DRAWING ARE PROPRIETARY INFORMATION OF VALMONT INDUSTRIES AND CONSIDERED A TRADE SECRET. ANY USE OR DISCLOSURE WITHOUT THE CONSENT OF VALMONT INDUSTRIES IS STRICTLY PROHIBITED.

#### DESCRIPTION

12' ROOFTOP  
PIPE FRAME

CPD NO.

DRAWN BY

CEK

1/2/2015

ENG. APPROVAL

CLASS

81

SUB

02

DRAWING USAGE

CUSTOMER

CHECKED BY

BMC 4/13/2022



A valmont COMPANY

Engineering  
 Support Team:  
 1-888-753-7446

Locations:  
 New York, NY  
 Atlanta, GA  
 Los Angeles, CA  
 Plymouth, IN  
 Salem, OR  
 Dallas, TX

PART NO.

SEE ASSEMBLY NO.

DWG. NO.

RTP12