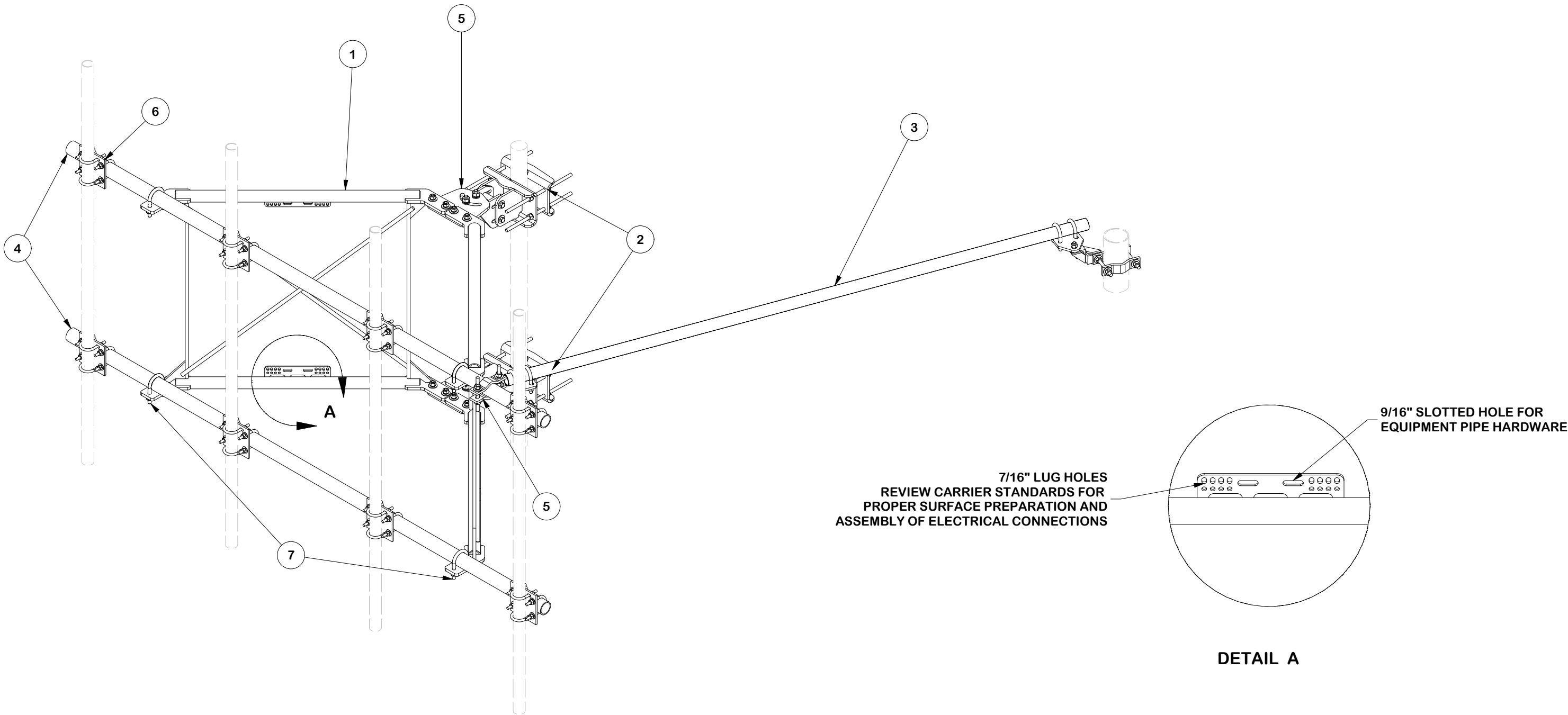


PARTS LIST						
ITEM	QTY	PART NO.	PART DESCRIPTION	LENGTH	UNIT WT.	NET WT.
1	2	X-VXDW45	XTREME DUTY 45" VERTICAL SUPPORT ARM		100.07	200.13
2	1	BCAM-HD	HEAVY DUTY BOLT CALIBRATED ANGLE MAINSTAY		147.01	147.01
3	1	SPTB	SLIDING TIE-BACK ASSEMBLY KIT		93.55	93.55
4	2	P30132	2-7/8" O.D. x 132" SCH. 40 PIPE	132 in	67.70	135.41
5	1	VFAPL4-K	HD FRAME PIVOT PLATE KIT		39.25	39.25
6	8	SCX2-K	CROSSOVER PLATE KIT		8.84	70.73
7	1	VFAHD-FACEHW	HARDWARE KIT FOR VFA SECTOR FRAME		17.93	17.93
					TOTAL WT. #	704.02



TOLERANCE NOTES

TOLERANCES ON DIMENSIONS, UNLESS OTHERWISE NOTED ARE:  
SAWED, SHEARED AND GAS CUT EDGES ( $\pm 0.030''$ )  
DRILLED AND GAS CUT HOLES ( $\pm 0.030''$ ) - NO CONING OF HOLES  
LASER CUT EDGES AND HOLES ( $\pm 0.010''$ ) - NO CONING OF HOLES  
BENDS AND ANGLES ARE  $\pm 1/2$  DEGREE  
ALL OTHER MACHINING ( $\pm 0.030''$ )  
ALL OTHER ASSEMBLY ( $\pm 0.060''$ )

PATENT INFORMATION: WWW.SITEPRO1.COM/PATENTS

PROPRIETARY NOTE:  
THE DATA AND TECHNIQUES CONTAINED IN THIS DRAWING ARE PROPRIETARY INFORMATION OF VALMONT INDUSTRIES AND CONSIDERED A TRADE SECRET. ANY USE OR DISCLOSURE WITHOUT THE CONSENT OF VALMONT INDUSTRIES IS STRICTLY PROHIBITED.

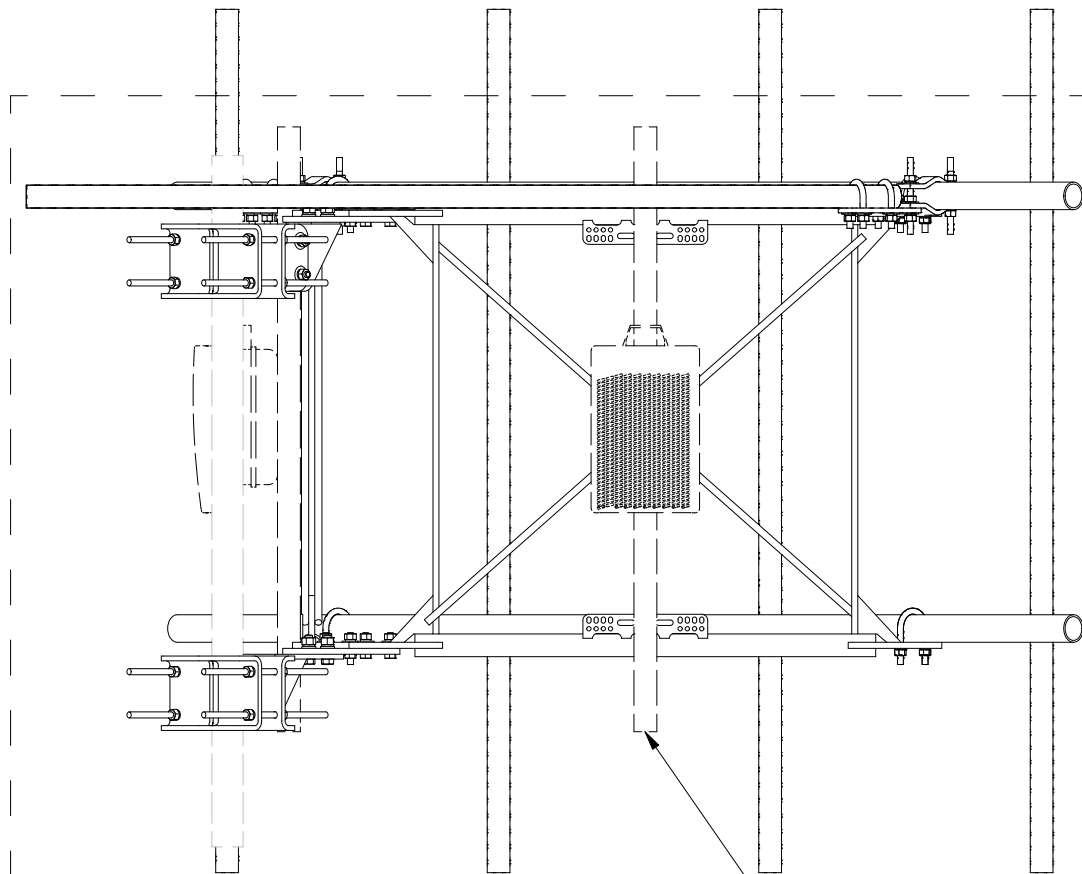
DESCRIPTION  
10' XTREME DUTY V-FRAME ASSEMBLY WITH ONE  
STIFF ARMS 5' STAND-OFF

CPD NO. SP1		DRAWN BY KS 12/10/2024		ENG. APPROVAL 2/17/2025	
CLASS 87	SUB 02	DRAWING USAGE CUSTOMER		CHECKED BY JET 2/17/2025	

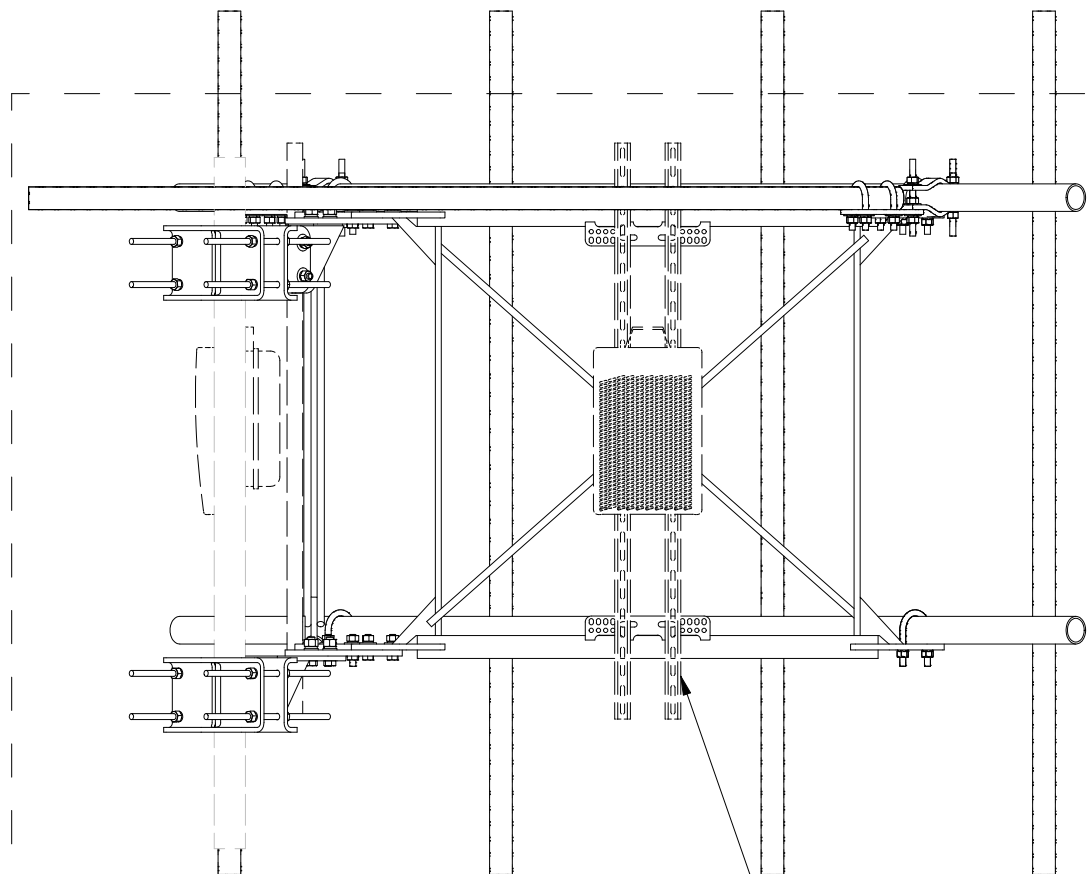


Engineering  
Support Team:  
sp1engineering@valmont.com

PART NO. VFA10-XDS	1 OF 16 PAGE
DWG. NO. VFA10-XDS	



EQUIPMENT PIPE AND HARDWARE  
SOLD SEPARATELY  
REQUIRES 1/2" HARDWARE AND  
2-3/8" TO 4-1/2" O.D. PIPE



UNISTRUT AND HARDWARE  
SOLD SEPARATELY  
REQUIRES 3/8" HARDWARE

V-BOOM ARM RRU MOUNTING  
UNISTRUT OR PIPE

TOLERANCE NOTES

TOLERANCES ON DIMENSIONS, UNLESS OTHERWISE NOTED ARE:  
SAWED, SHEARED AND GAS CUT EDGES ( $\pm 0.030"$ )  
DRILLED AND GAS CUT HOLES ( $\pm 0.030"$ ) - NO CONING OF HOLES  
LASER CUT EDGES AND HOLES ( $\pm 0.010"$ ) - NO CONING OF HOLES  
BENDS AND ANGLES ARE  $\pm 1/2$  DEGREE  
ALL OTHER MACHINING ( $\pm 0.030"$ )  
ALL OTHER ASSEMBLY ( $\pm 0.060"$ )

PATENT INFORMATION: [WWW.SITEPRO1.COM/PATENTS](http://WWW.SITEPRO1.COM/PATENTS)

PROPRIETARY NOTE:  
THE DATA AND TECHNIQUES CONTAINED IN THIS DRAWING ARE PROPRIETARY INFORMATION OF VALMONT INDUSTRIES AND CONSIDERED A TRADE SECRET. ANY USE OR DISCLOSURE WITHOUT THE CONSENT OF VALMONT INDUSTRIES IS STRICTLY PROHIBITED.

DESCRIPTION

10' XTREME DUTY V-FRAME ASSEMBLY WITH ONE  
STIFF ARMS 5' STAND-OFF

CPD NO.

SP1

DRAWN BY

KS 12/10/2024

ENG. APPROVAL

2/17/2025

CLASS

87

SUB

02

DRAWING USAGE

CUSTOMER

CHECKED BY

JET

2/17/2025



A valmont COMPANY

Engineering  
Support Team:  
[sp1engineering@valmont.com](mailto:sp1engineering@valmont.com)

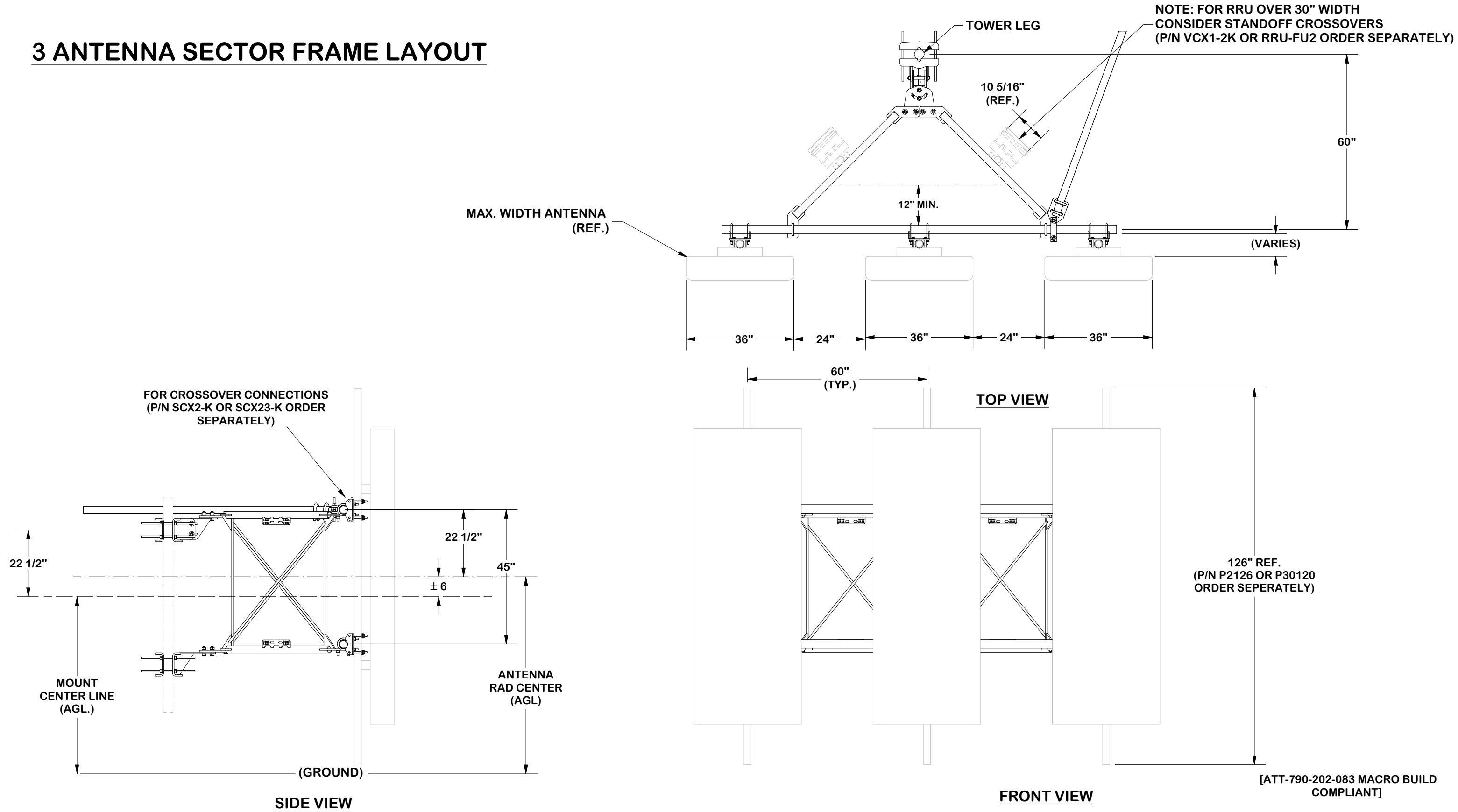
PART NO.

VFA10-XDS

DWG. NO.

VFA10-XDS

3 ANTENNA SECTOR FRAME LAYOUT



TOLERANCE NOTES

TOLERANCES ON DIMENSIONS, UNLESS OTHERWISE NOTED ARE:  
SAWED, SHEARED AND GAS CUT EDGES ( $\pm 0.030"$ )  
DRILLED AND GAS CUT HOLES ( $\pm 0.030"$ ) - NO CONING OF HOLES  
LASER CUT EDGES AND HOLES ( $\pm 0.010"$ ) - NO CONING OF HOLES  
BENDS AND ANGLES ARE  $\pm 1/2$  DEGREE  
ALL OTHER MACHINING ( $\pm 0.030"$ )  
ALL OTHER ASSEMBLY ( $\pm 0.060"$ )

PATENT INFORMATION: WWW.SITEPRO1.COM/PATENTS

PROPRIETARY NOTE:  
THE DATA AND TECHNIQUES CONTAINED IN THIS DRAWING ARE PROPRIETARY INFORMATION OF VALMONT INDUSTRIES AND CONSIDERED A TRADE SECRET. ANY USE OR DISCLOSURE WITHOUT THE CONSENT OF VALMONT INDUSTRIES IS STRICTLY PROHIBITED.

DESCRIPTION

10' XTREME DUTY V-FRAME ASSEMBLY WITH ONE  
STIFF ARMS 5' STAND-OFF

CPD NO.

SP1

DRAWN BY

KS 12/10/2024

ENG. APPROVAL

2/17/2025

CLASS

87

SUB

02

DRAWING USAGE

CUSTOMER

CHECKED BY

JET 2/17/2025



A valmont COMPANY

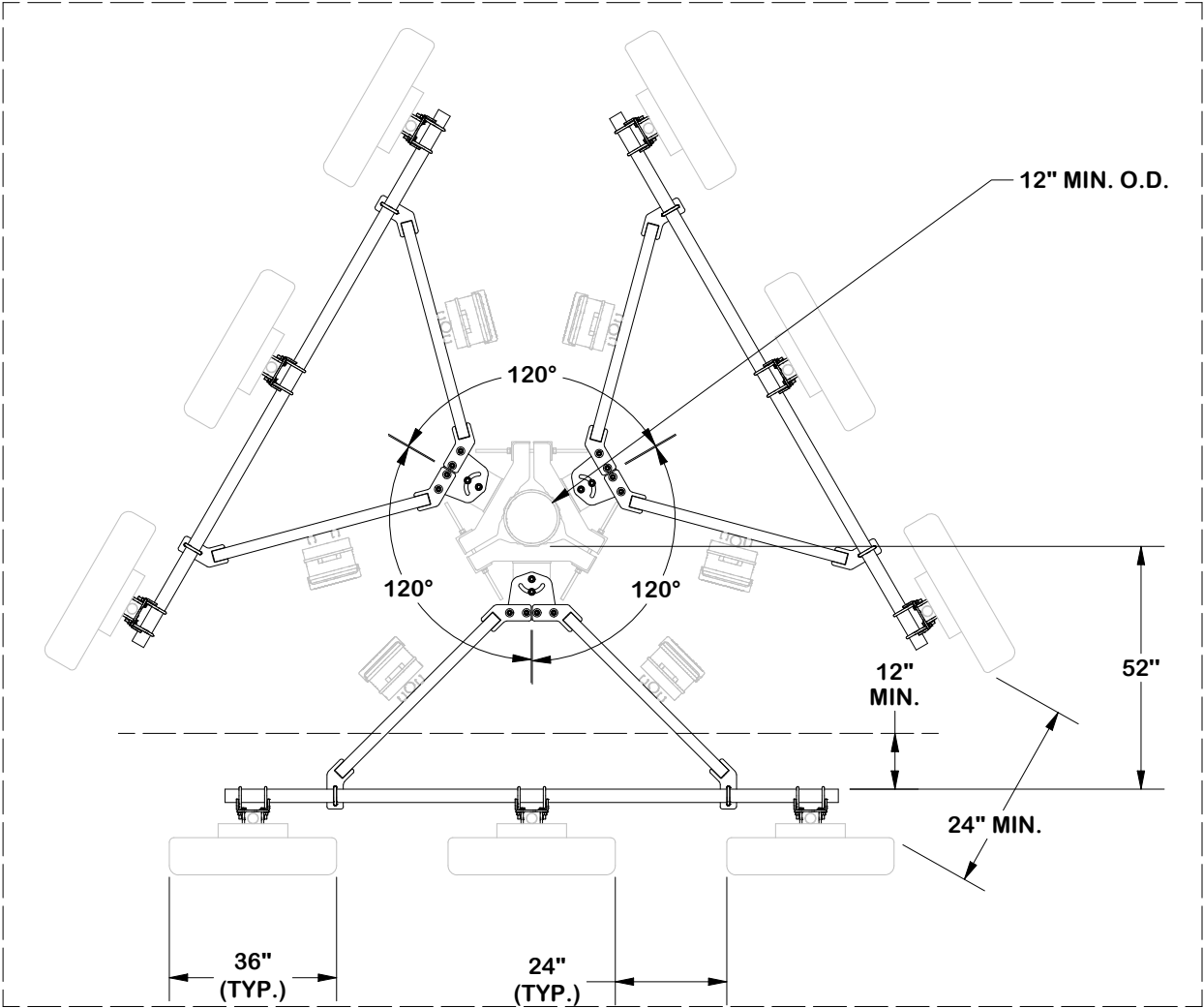
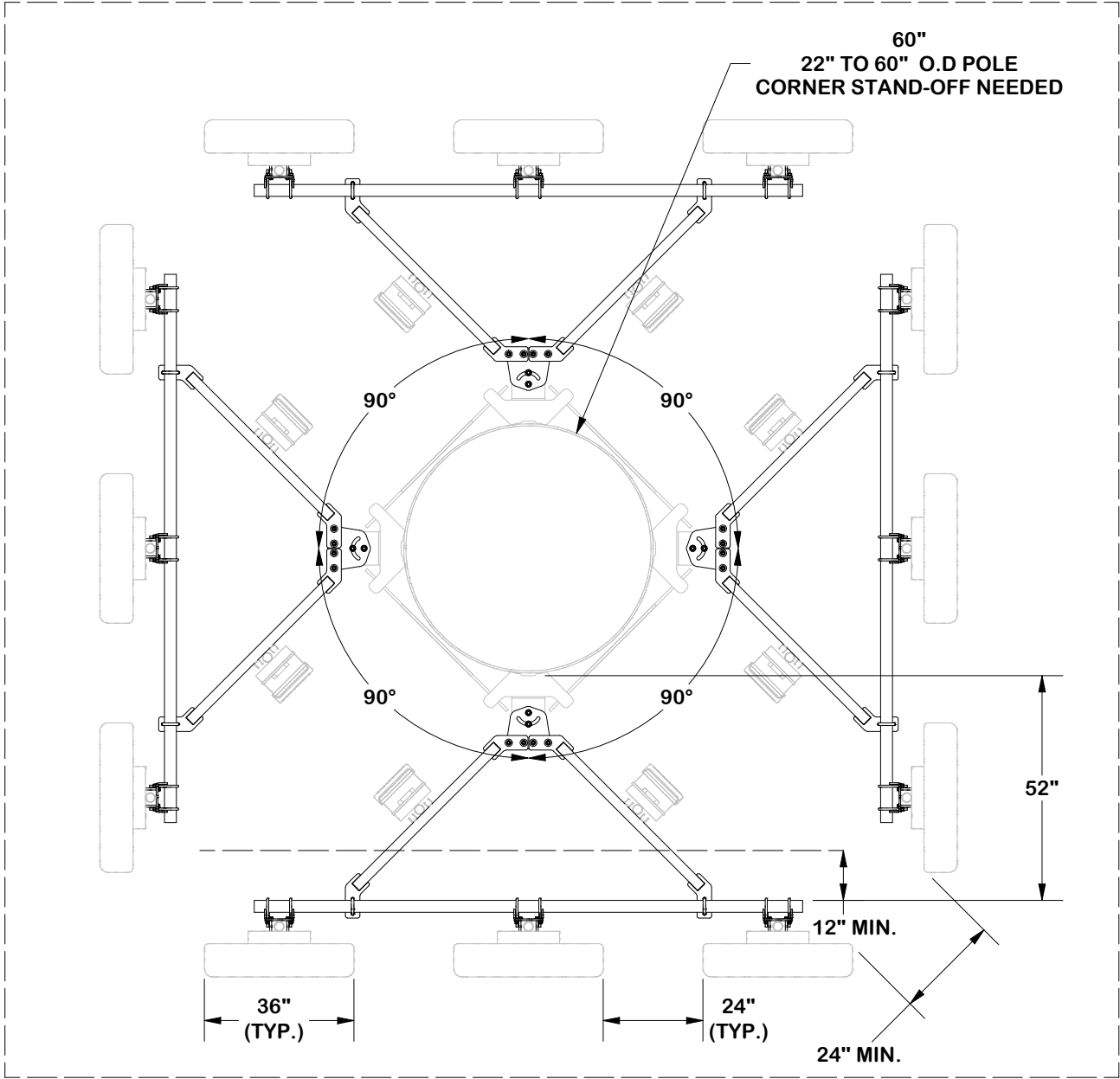
Engineering  
Support Team:  
sp1engineering@valmont.com

PART NO.

VFA10-XDS

DWG. NO.

VFA10-XDS



[ATT-790-202-083 MACRO BUILD COMPLIANT]

NOTE: TIEBACKS OMITTED FOR CLARITY

**TOLERANCE NOTES**

TOLERANCES ON DIMENSIONS, UNLESS OTHERWISE NOTED ARE:  
SAWED, SHEARED AND GAS CUT EDGES ( $\pm 0.030"$ )  
DRILLED AND GAS CUT HOLES ( $\pm 0.030"$ ) - NO CONING OF HOLES  
LASER CUT EDGES AND HOLES ( $\pm 0.010"$ ) - NO CONING OF HOLES  
BENDS AND ANGLES ARE  $\pm 1/2$  DEGREE  
ALL OTHER MACHINING ( $\pm 0.030"$ )  
ALL OTHER ASSEMBLY ( $\pm 0.060"$ )

PATENT INFORMATION: [WWW.SITEPRO1.COM/PATENTS](http://WWW.SITEPRO1.COM/PATENTS)

PROPRIETARY NOTE:  
THE DATA AND TECHNIQUES CONTAINED IN THIS DRAWING ARE PROPRIETARY INFORMATION OF VALMONT INDUSTRIES AND CONSIDERED A TRADE SECRET. ANY USE OR DISCLOSURE WITHOUT THE CONSENT OF VALMONT INDUSTRIES IS STRICTLY PROHIBITED.

DESCRIPTION  
**10' XTREME DUTY V-FRAME ASSEMBLY WITH ONE STIFF ARMS 5' STAND-OFF**

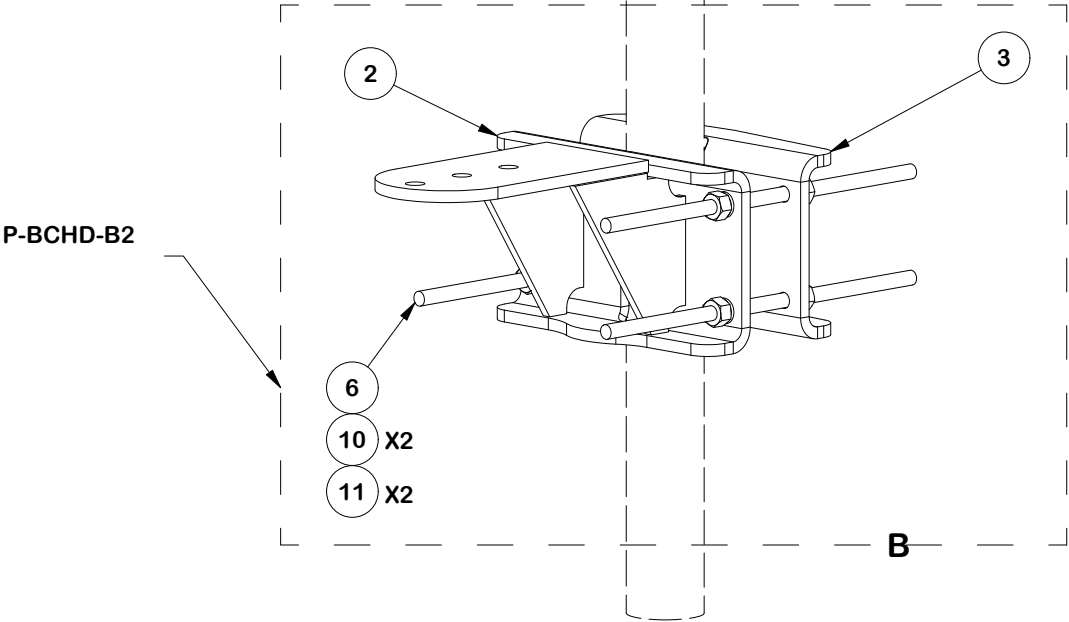
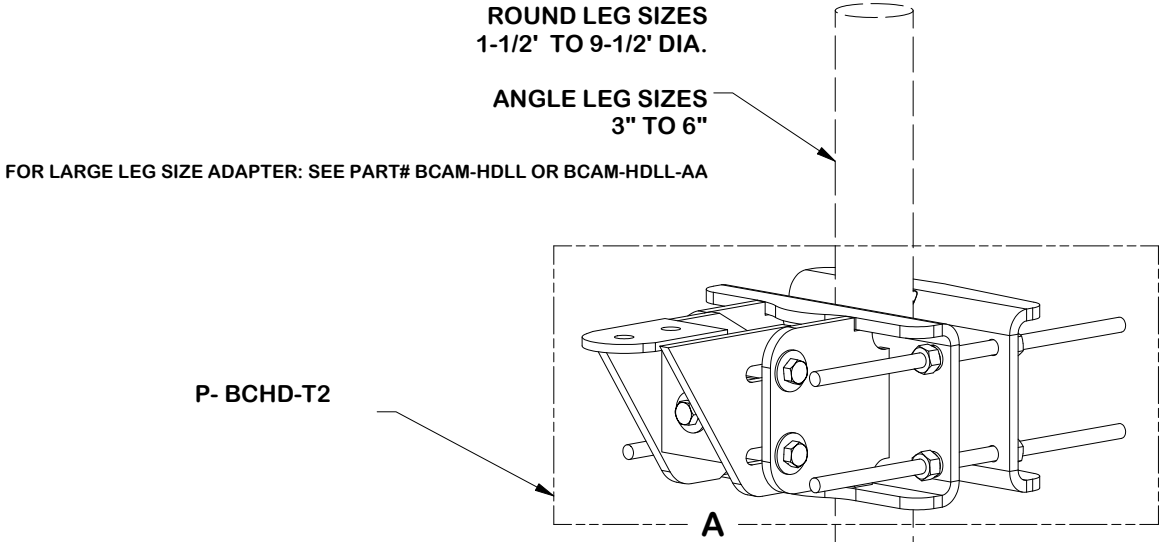
CPD NO. <b>SP1</b>		DRAWN BY <b>KS 12/10/2024</b>		ENG. APPROVAL <b>2/17/2025</b>	
CLASS <b>87</b>	SUB <b>02</b>	DRAWING USAGE <b>CUSTOMER</b>		CHECKED BY <b>JET</b>	<b>2/17/2025</b>



Engineering  
Support Team:  
[sp1engineering@valmont.com](mailto:sp1engineering@valmont.com)

A valmont COMPANY

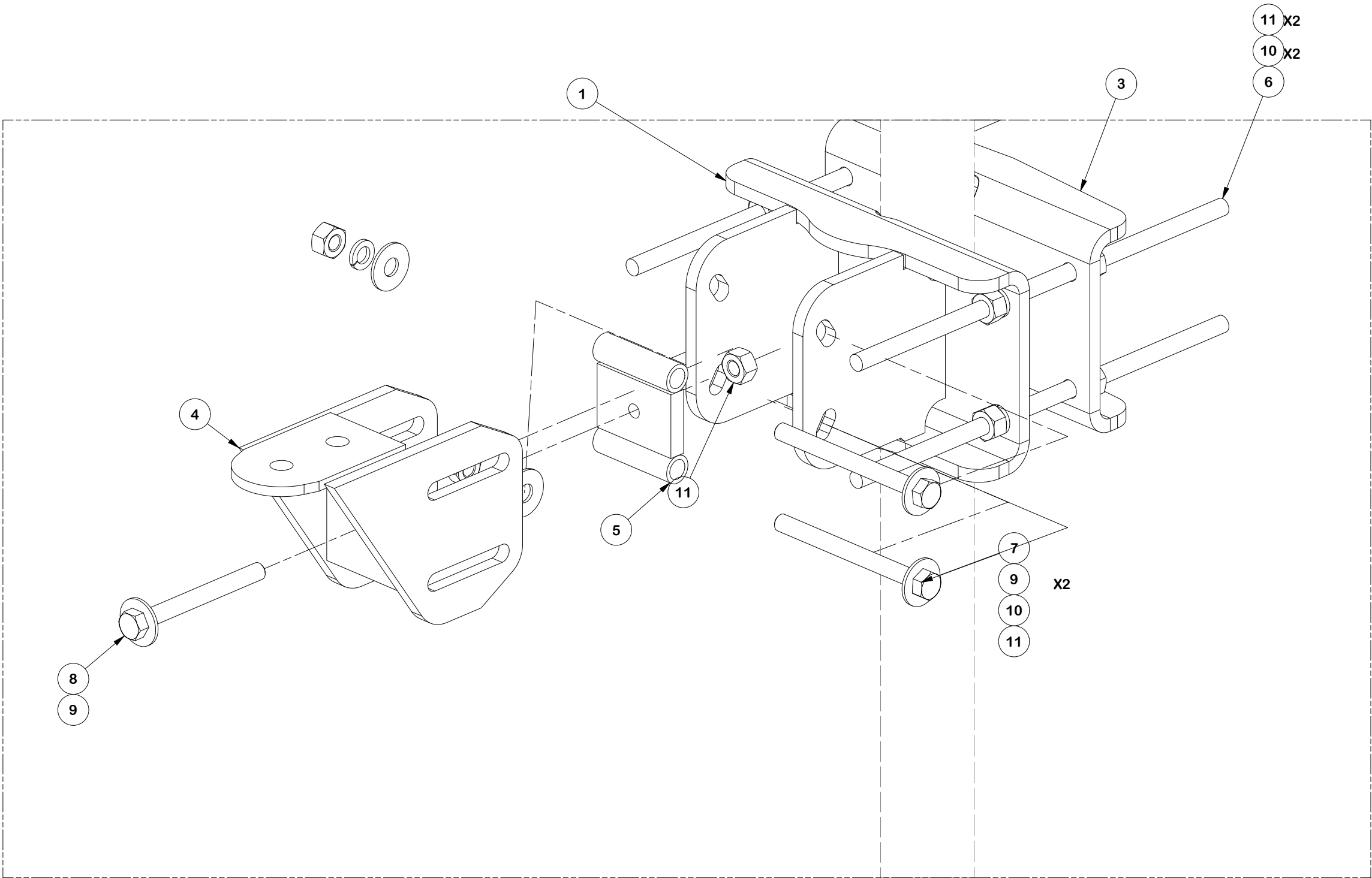
PART NO.	<b>CORNER LAYOUT</b>
DWG. NO.	<b>VFA10-XDS</b>



PARTS LIST						
ITEM	QTY	PART NO.	PART DESCRIPTION	LENGTH	UNIT WT.	NET WT.
1	1	X-HDCAMTBW	CLAMP WELDMENT FOR BCAM-HD		33.86	33.86
2	1	X-MHTPHD	MULTI-HOLE TAPER PLATE WELDMENT		36.24	36.24
3	2	X-LCBP4	BENT BACKING PLATE	13 in	20.04	40.09
4	1	X-HDCAMSS	ANGLE ADJUSTMENT WELDMENT FOR BCAM-HD		16.39	16.39
5	1	X-HDCAMSP	POSITIONING PLATE WELDMENT FOR BCAM-HD		2.58	2.58
6	8	G58R-18	5/8" x 18" THREADED ROD (HDG.)		1.57	12.54
7	2	G5807	5/8" x 7" HDG HEX BOLT GR5 FULL THREAD	7 in	0.70	1.41
8	1	G5806	5/8" x 6" HDG HEX BOLT GR5 FULL THREAD	6 in	0.62	0.62
9	5	G58FW	5/8" HDG USS FLATWASHER	1/8 in	0.07	0.35
10	18	G58LW	5/8" HDG LOCKWASHER		0.03	0.47
11	19	G58NUT	5/8" HDG HEAVY 2H HEX NUT		0.13	2.47
					TOTAL WT. #	147.02

\*\* FOR DETAIL SEE PAGE 2\*\*

					<div>TOLERANCE NOTES</div> <div>TOLERANCES ON DIMENSIONS, UNLESS OTHERWISE NOTED ARE: SAWED, SHEARED AND GAS CUT EDGES (<math>\pm 0.030''</math>) DRILLED AND GAS CUT HOLES (<math>\pm 0.030''</math>) - NO CONING OF HOLES LASER CUT EDGES AND HOLES (<math>\pm 0.010''</math>) - NO CONING OF HOLES BENDS ARE <math>\pm 1/2</math> DEGREE ALL OTHER MACHINING (<math>\pm 0.030''</math>) ALL OTHER ASSEMBLY (<math>\pm 0.060''</math>)</div> <div>PROPRIETARY NOTE: THE DATA AND TECHNIQUES CONTAINED IN THIS DRAWING ARE PROPRIETARY INFORMATION OF VALMONT INDUSTRIES AND CONSIDERED A TRADE SECRET. ANY USE OR DISCLOSURE WITHOUT THE CONSENT OF VALMONT INDUSTRIES IS STRICTLY PROHIBITED.</div>					<div>DESCRIPTION</div> <div>10' XTREME DUTY V-FRAME ASSEMBLY WITH ONE STIFF ARMS 5' STAND-OFF</div>					<div><div><div>SITE PRO 1</div><div>A valmont COMPANY</div></div><div>Locations: New York, NY Atlanta, GA Los Angeles, CA Plymouth, IN Salem, OR Dallas, TX</div><div>Engineering Support Team: 1-888-753-7446</div></div>				
A		REPLACED C CHANNEL BRKT WITH FORMED PLATE BRKT			SP1	KS	4/24/2018		CPD NO.		DRAWN BY		ENG. APPROVAL		PART NO.		5 OF 16 PAGE		
REV		DESCRIPTION OF REVISIONS			CPD	BY	DATE		SP1		KS 12/10/2024		2/17/2025		BCAM-HD				
REVISION HISTORY									CLASS		DRAWING USAGE		CHECKED BY		DWG. NO.				
									87		CUSTOMER		JET 2/17/2025		VFA10-XDS				
									SUB										
									02										



VIEW A

					<div>TOLERANCE NOTES</div> <div>TOLERANCES ON DIMENSIONS, UNLESS OTHERWISE NOTED ARE: SAWED, SHEARED AND GAS CUT EDGES (<math>\pm 0.030''</math>) DRILLED AND GAS CUT HOLES (<math>\pm 0.030''</math>) - NO CONING OF HOLES LASER CUT EDGES AND HOLES (<math>\pm 0.010''</math>) - NO CONING OF HOLES BENDS ARE <math>\pm 1/2</math> DEGREE ALL OTHER MACHINING (<math>\pm 0.030''</math>) ALL OTHER ASSEMBLY (<math>\pm 0.060''</math>)</div> <div>PROPRIETARY NOTE: THE DATA AND TECHNIQUES CONTAINED IN THIS DRAWING ARE PROPRIETARY INFORMATION OF VALMONT INDUSTRIES AND CONSIDERED A TRADE SECRET. ANY USE OR DISCLOSURE WITHOUT THE CONSENT OF VALMONT INDUSTRIES IS STRICTLY PROHIBITED.</div>		<div>DESCRIPTION</div> <div>10' XTREME DUTY V-FRAME ASSEMBLY WITH ONE STIFF ARMS 5' STAND-OFF</div>		<div><div><div>SITE PRO 1</div><div>A valmont COMPANY</div></div><div>Locations: New York, NY Atlanta, GA Los Angeles, CA Plymouth, IN Salem, OR Dallas, TX</div><div>Engineering Support Team: 1-888-753-7446</div></div>			<div>PART NO.</div> <div>BCAM-HD</div>		<div>6 OF 16</div> <div>PAGE</div>				
A	REPLACED C CHANNEL BRKT WITH FORMED PLATE BRKT			SP1	KS	4/24/2018	CPD NO.	DRAWN BY		ENG. APPROVAL		DWG. NO.						
REV	DESCRIPTION OF REVISIONS			CPD	BY	DATE	CLASS	SUB	DRAWING USAGE		CHECKED BY		VFA10-XDS					
REVISION HISTORY									87		02		CUSTOMER		JET 2/17/2025			

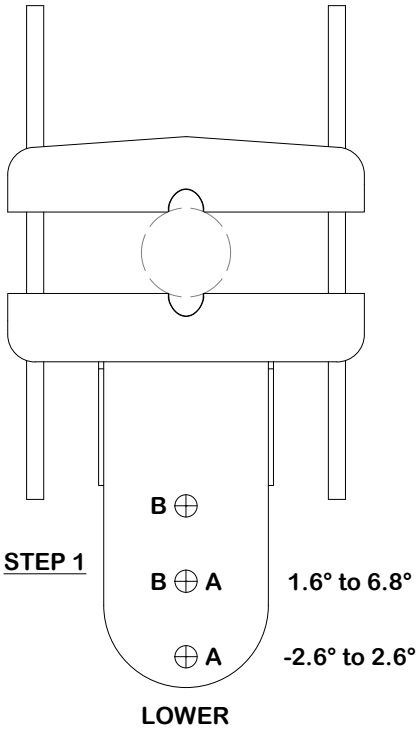
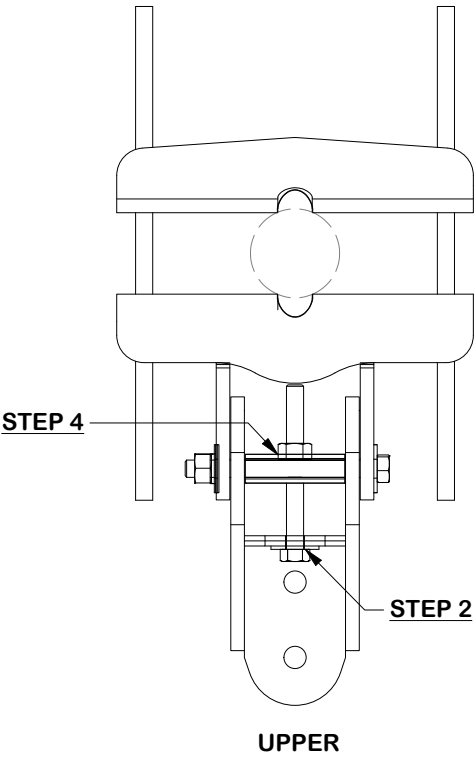


ANGLE CALIBRATING PROCEDURE:

1. MEASURE TOWER TAPER  
AND PICK LOWER BRACKET  
HOLE:

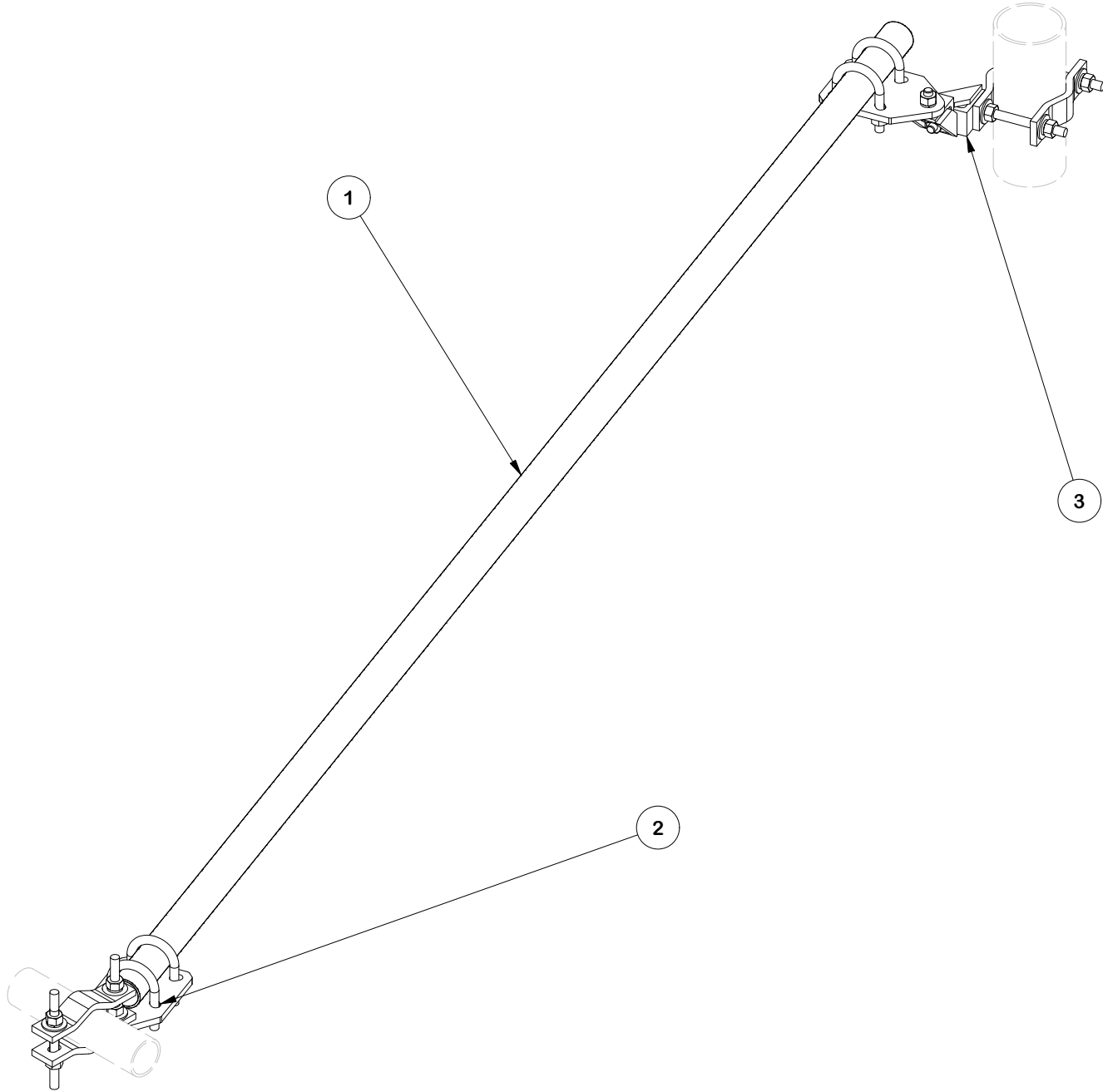
HOLE A = -2.6° TO 2.6°


HOLE B = 1.6° TO 6.8°
2. USE CALIBRATING BOLT  
TO ADJUST FRAME TO  
DESIRED TAPER
3. TORQUE LOCKING BOLTS  
TO 100 ft.-lbs.
4. ADVANCE LOCKING NUT  
TO POSITIONING PLATE,  
THEN TIGHTEN.



					<div>TOLERANCE NOTES</div> <div>TOLERANCES ON DIMENSIONS, UNLESS OTHERWISE NOTED ARE: SAWED, SHEARED AND GAS CUT EDGES (<math>\pm 0.030''</math>) DRILLED AND GAS CUT HOLES (<math>\pm 0.030''</math>) - NO CONING OF HOLES LASER CUT EDGES AND HOLES (<math>\pm 0.010''</math>) - NO CONING OF HOLES BENDS ARE <math>\pm 1/2</math> DEGREE ALL OTHER MACHINING (<math>\pm 0.030''</math>) ALL OTHER ASSEMBLY (<math>\pm 0.060''</math>)</div> <div>PROPRIETARY NOTE: THE DATA AND TECHNIQUES CONTAINED IN THIS DRAWING ARE PROPRIETARY INFORMATION OF VALMONT INDUSTRIES AND CONSIDERED A TRADE SECRET. ANY USE OR DISCLOSURE WITHOUT THE CONSENT OF VALMONT INDUSTRIES IS STRICTLY PROHIBITED.</div>					<div>DESCRIPTION</div> <div>10' XTREME DUTY V-FRAME ASSEMBLY WITH ONE STIFF ARMS 5' STAND-OFF</div>					<div><div><div>SITE PRO1</div><div>A valmontCOMPANY</div></div><div>Locations: New York, NY Atlanta, GA Los Angeles, CA Plymouth, IN Salem, OR Dallas, TX</div><div>Engineering Support Team: 1-888-753-7446</div></div>				
A		REPLACED C CHANNEL BRKT WITH FORMED PLATE BRKT			SP1	KS	4/24/2018		CPD NO.		DRAWN BY		ENG. APPROVAL		PART NO.		7 OF 16 PAGE		
REV		DESCRIPTION OF REVISIONS			CPD	BY	DATE		SP1		KS 12/10/2024		2/17/2025		BCAM-HD				
REVISION HISTORY									CLASS		SUB		DRAWING USAGE		CHECKED BY			DWG. NO.	
									87		02		CUSTOMER		JET 2/17/2025		VFA10-XDS		

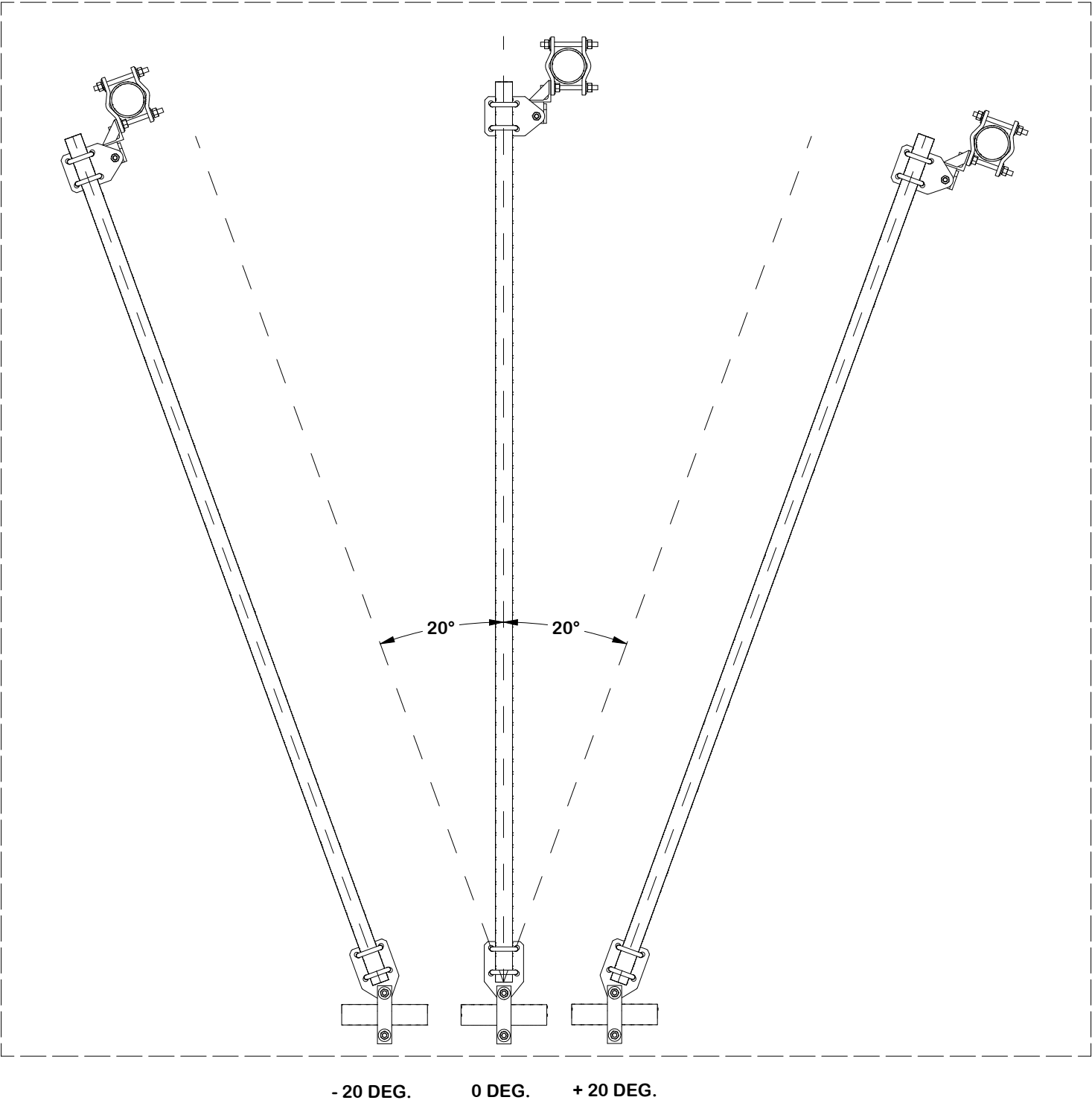
PARTS LIST						
ITEM	QTY	PART NO.	PART DESCRIPTION	LENGTH	UNIT WT.	NET WT.
1	1	P2126	2-3/8" X 126" (2" SCH. 40) GALVANIZED PIPE	126 in	40.75	40.75
2	1	SPTBU-F	UNIVERSAL SLIDING PIPE TIE BACK ASSEMBLY (FRONT CONNECTION ONLY)		19.26	19.26
3	1	SPTBU-B	UNIVERSAL SLIDING PIPE TIE BACK ASSEMBLY (BACK CONNECTION ONLY)		33.54	33.54
					TOTAL WT. #	93.55



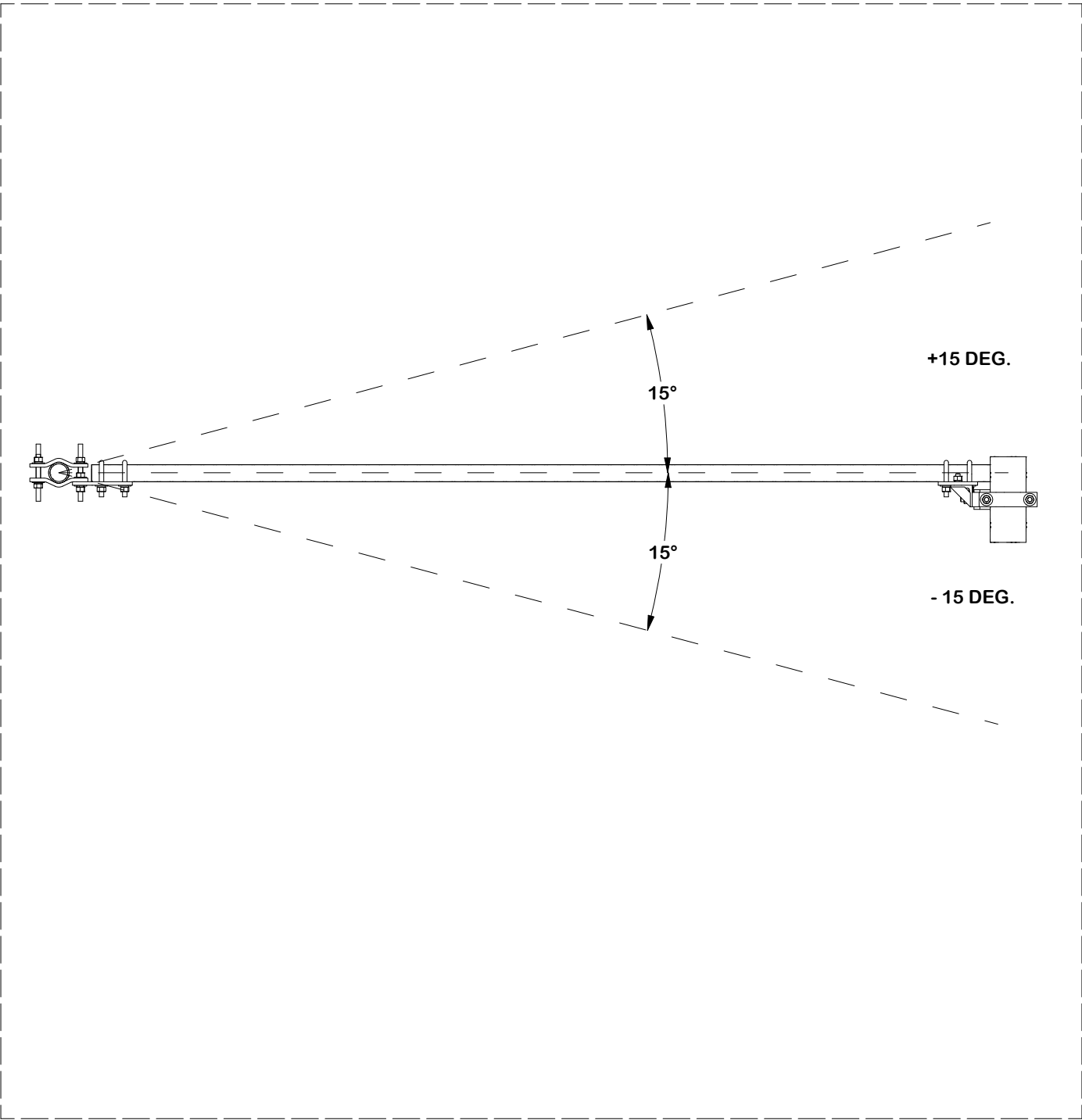
						<div>TOLERANCE NOTES</div> <div>TOLERANCES ON DIMENSIONS, UNLESS OTHERWISE NOTED ARE: SAWED, SHEARED AND GAS CUT EDGES (<math>\pm 0.030''</math>) DRILLED AND GAS CUT HOLES (<math>\pm 0.030''</math>) - NO CONING OF HOLES LASER CUT EDGES AND HOLES (<math>\pm 0.010''</math>) - NO CONING OF HOLES BENDS AND ANGLES ARE <math>\pm 1/2</math> DEGREE ALL OTHER MACHINING (<math>\pm 0.030''</math>) ALL OTHER ASSEMBLY (<math>\pm 0.060''</math>)</div>				<div>DESCRIPTION</div> <div>10' XTREME DUTY V-FRAME ASSEMBLY WITH ONE STIFF ARMS 5' STAND-OFF</div>				<div><div><div>SITE PRO</div><div>1</div></div><div>Engineering Support Team: sp1engineering@valmont.com</div></div> <div>A valmont  COMPANY</div>			
						CPD NO. SP1		DRAWN BY KS 12/10/2024		ENG. APPROVAL 2/17/2025		PART NO. SPTB		8 OF 16 PAGE			
REV		DESCRIPTION OF REVISIONS		CPD BY DATE		DWG. NO. VFA10-XDS											
REVISION HISTORY						PATENT INFORMATION: WWW.SITEPRO1.COM/PATENTS											
						PROPRIETARY NOTE: THE DATA AND TECHNIQUES CONTAINED IN THIS DRAWING ARE PROPRIETARY INFORMATION OF VALMONT INDUSTRIES AND CONSIDERED A TRADE SECRET. ANY USE OR DISCLOSURE WITHOUT THE CONSENT OF VALMONT INDUSTRIES IS STRICTLY PROHIBITED.				CLASS 87		SUB 02		DRAWING USAGE CUSTOMER		CHECKED BY JET 2/17/2025	



RECOMMENDED HORIZONTAL ADJUSTMENT



RECOMMENDED VERTICAL ADJUSTMENT



TOLERANCE NOTES

TOLERANCES ON DIMENSIONS, UNLESS OTHERWISE NOTED ARE:  
SAWED, SHEARED AND GAS CUT EDGES ( $\pm 0.030"$ )  
DRILLED AND GAS CUT HOLES ( $\pm 0.030"$ ) - NO CONING OF HOLES  
LASER CUT EDGES AND HOLES ( $\pm 0.010"$ ) - NO CONING OF HOLES  
BENDS AND ANGLES ARE  $\pm 1/2$  DEGREE  
ALL OTHER MACHINING ( $\pm 0.030"$ )  
ALL OTHER ASSEMBLY ( $\pm 0.060"$ )

PATENT INFORMATION: [WWW.SITEPRO1.COM/PATENTS](http://WWW.SITEPRO1.COM/PATENTS)

PROPRIETARY NOTE:  
THE DATA AND TECHNIQUES CONTAINED IN THIS DRAWING ARE PROPRIETARY INFORMATION OF VALMONT INDUSTRIES AND CONSIDERED A TRADE SECRET. ANY USE OR DISCLOSURE WITHOUT THE CONSENT OF VALMONT INDUSTRIES IS STRICTLY PROHIBITED.

DESCRIPTION

10' XTREME DUTY V-FRAME ASSEMBLY WITH ONE  
STIFF ARMS 5' STAND-OFF

CPD NO. SP1		DRAWN BY KS 12/10/2024		ENG. APPROVAL 2/17/2025	
CLASS 87	SUB 02	DRAWING USAGE CUSTOMER		CHECKED BY JET 2/17/2025	

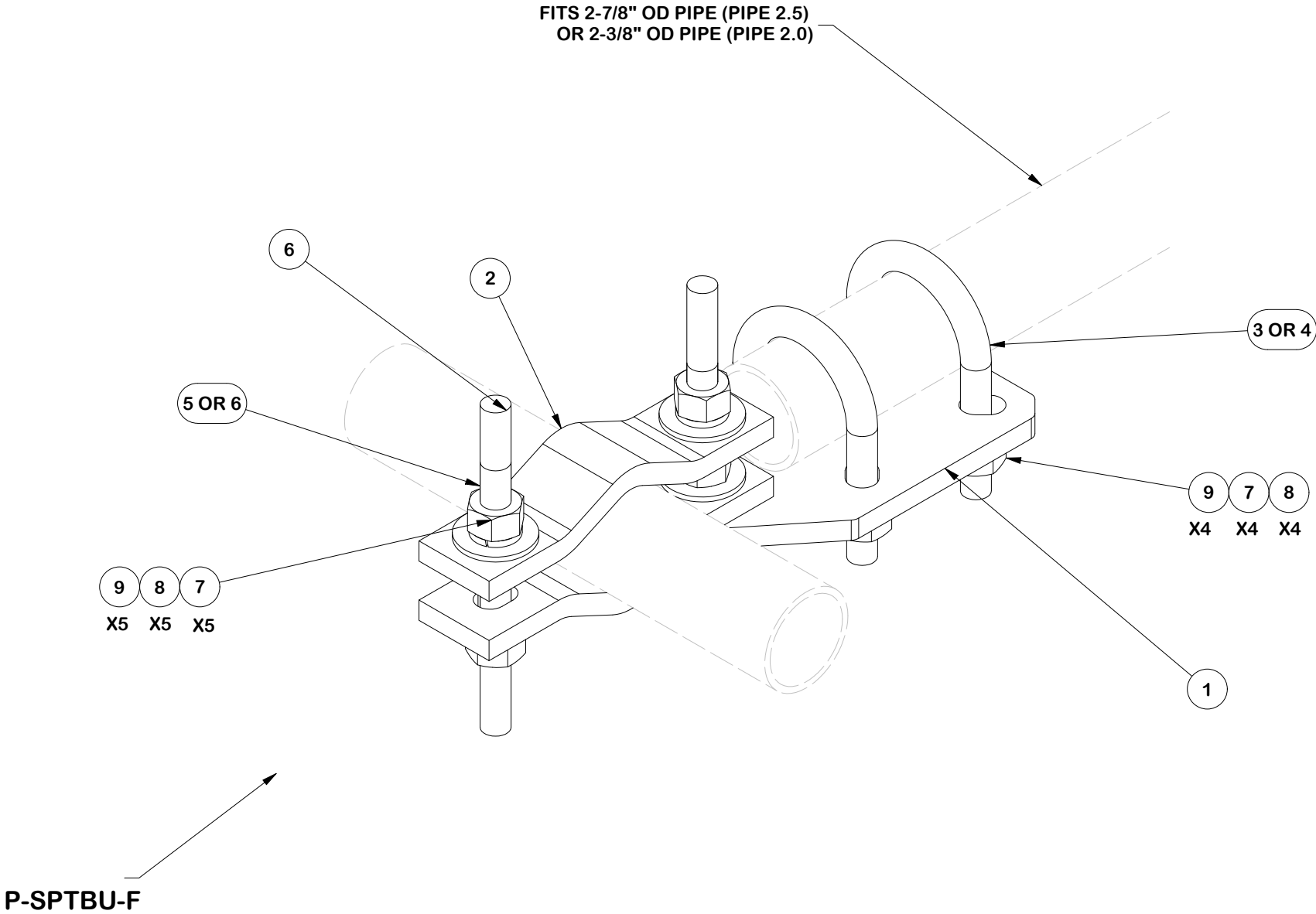


A valmont COMPANY

Engineering  
Support Team:  
[sp1engineering@valmont.com](mailto:sp1engineering@valmont.com)

PART NO. SPTB	9 OF 16 PAGE
DWG. NO. VFA10-XDS	

PARTS LIST						
ITEM	QTY	PART NO.	PART DESCRIPTION	LENGTH	UNIT WT.	NET WT.
1	1	X-SPTB-U	SLIDING PIPE TIE BACK PLATE	5 1/2 in	5.58	5.58
2	2	DCP	1/2" THICK, 5-3/4" CNTER TO CENTER CLAMP HALF	8 1/8 in	2.36	4.72
3	2	X-UB5258	5/8 X 2-5/8" X 4-1/2" X 2" U-BOLT	4 1/2 in	1.06	2.12
4	2	X-UB5300	5/8" X 3" X 5-1/4" X 2-1/2" U-BOLT	5 1/4 in	1.22	2.43
5	2	G5804	5/8" x 4" HDG HEX BOLT GR5		0.44	0.89
6	2	G58R-8	5/8" X 8" THREADED ROD (HDG.)		0.74	1.48
7	9	G58LW	5/8" HDG LOCKWASHER		0.03	0.23
8	9	G58FW	5/8" HDG USS FLATWASHER	1/8 in	0.07	0.63
9	9	G58NUT	5/8" HDG HEAVY 2H HEX NUT		0.13	1.17
					TOTAL WT. #	19.26



TOLERANCE NOTES

TOLERANCES ON DIMENSIONS, UNLESS OTHERWISE NOTED ARE:  
SAWED, SHEARED AND GAS CUT EDGES ( $\pm 0.030"$ )  
DRILLED AND GAS CUT HOLES ( $\pm 0.030"$ ) - NO CONING OF HOLES  
LASER CUT EDGES AND HOLES ( $\pm 0.010"$ ) - NO CONING OF HOLES  
BENDS AND ANGLES ARE  $\pm 1/2$  DEGREE  
ALL OTHER MACHINING ( $\pm 0.030"$ )  
ALL OTHER ASSEMBLY ( $\pm 0.060"$ )

PATENT INFORMATION: WWW.SITEPRO1.COM/PATENTS

PROPRIETARY NOTE:  
THE DATA AND TECHNIQUES CONTAINED IN THIS DRAWING ARE PROPRIETARY INFORMATION OF VALMONT INDUSTRIES AND CONSIDERED A TRADE SECRET. ANY USE OR DISCLOSURE WITHOUT THE CONSENT OF VALMONT INDUSTRIES IS STRICTLY PROHIBITED.

DESCRIPTION

10' XTREME DUTY V-FRAME ASSEMBLY WITH ONE  
STIFF ARMS 5' STAND-OFF

CPD NO.

SP1

DRAWN BY

KS 12/10/2024

ENG. APPROVAL

2/17/2025

CLASS

87

SUB

02

DRAWING USAGE

CUSTOMER

CHECKED BY

JET 2/17/2025



A valmont COMPANY

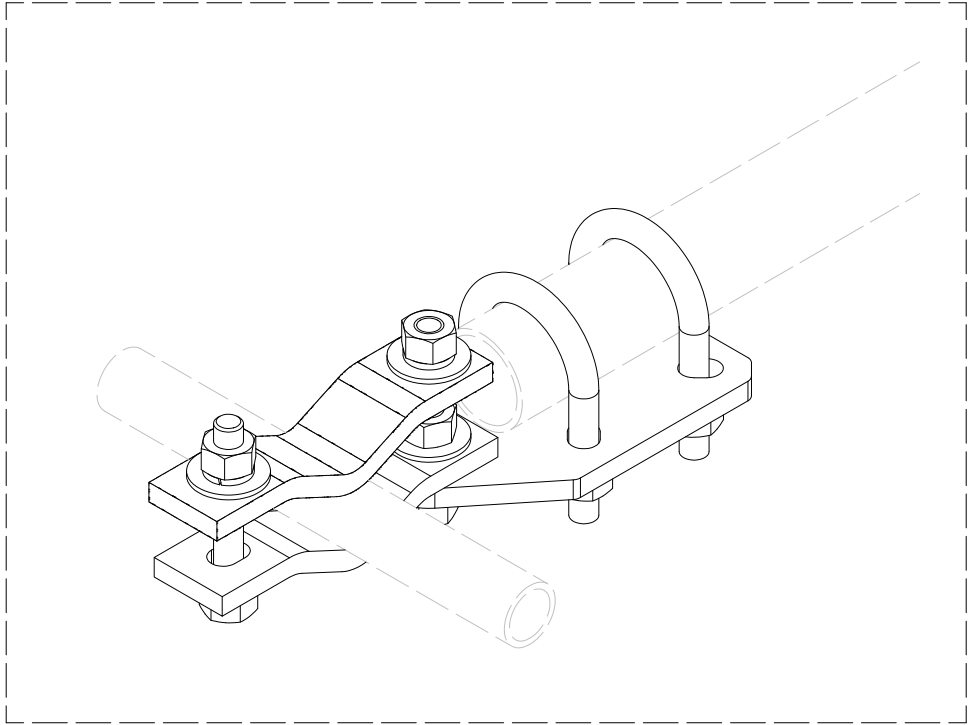
Engineering  
Support Team:  
sp1engineering@valmont.com

PART NO.

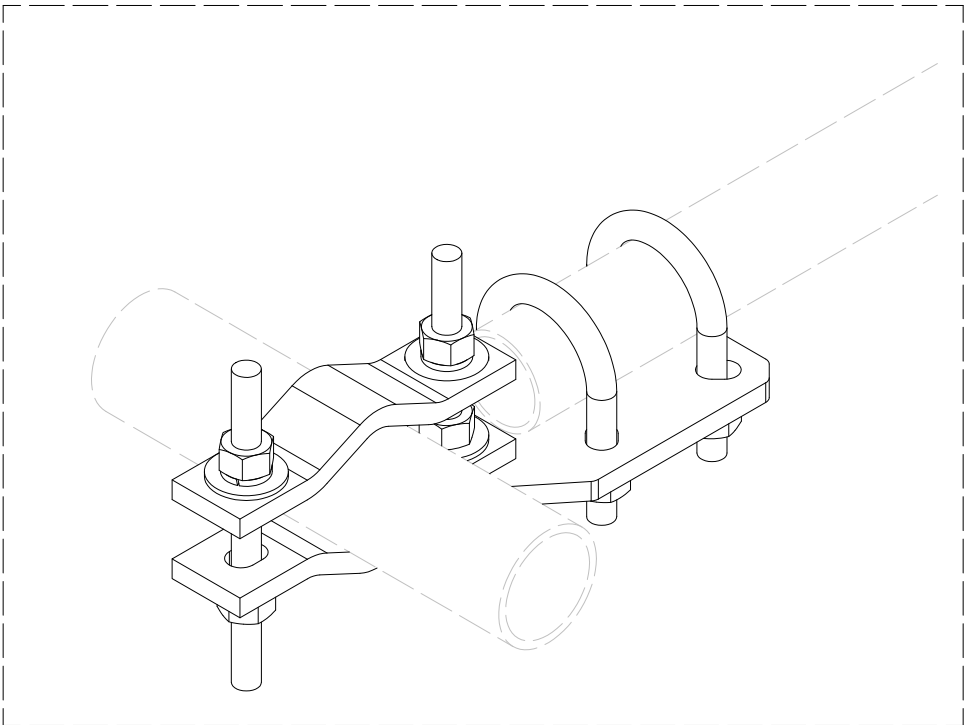
SPTBU-F

DWG. NO.

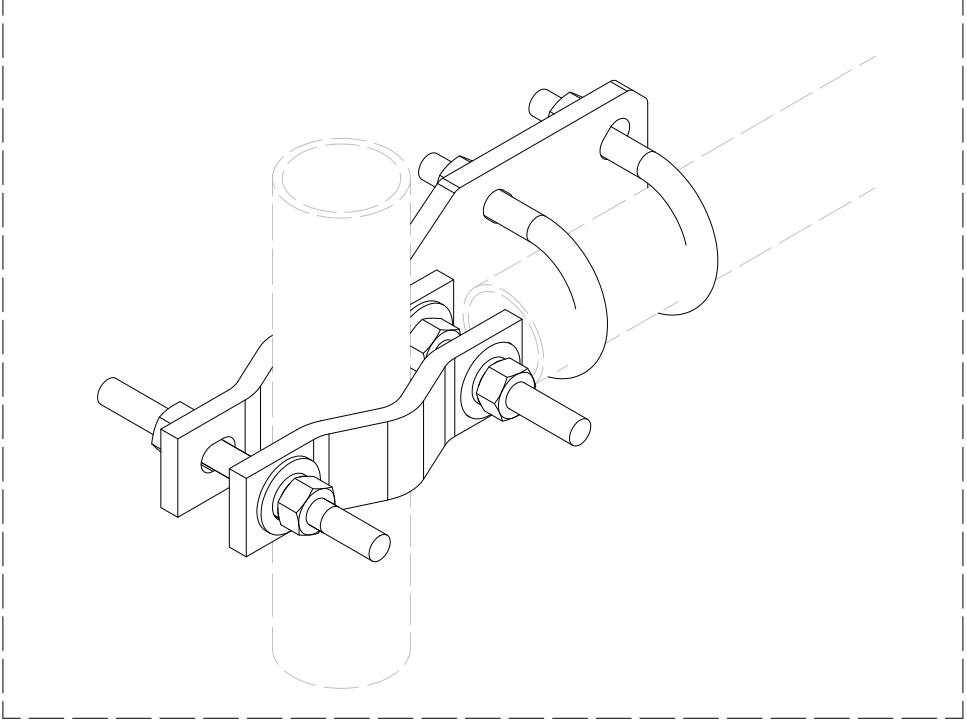
VFA10-XDS



SMALL ATTACHMENT 1-1/2" TO 2-3/8"  
NOTE: FLIP HALF BACK CLAMP




ATTACHMENT 2-3/8" TO 5"  
HORIZONTAL ORIENTATION

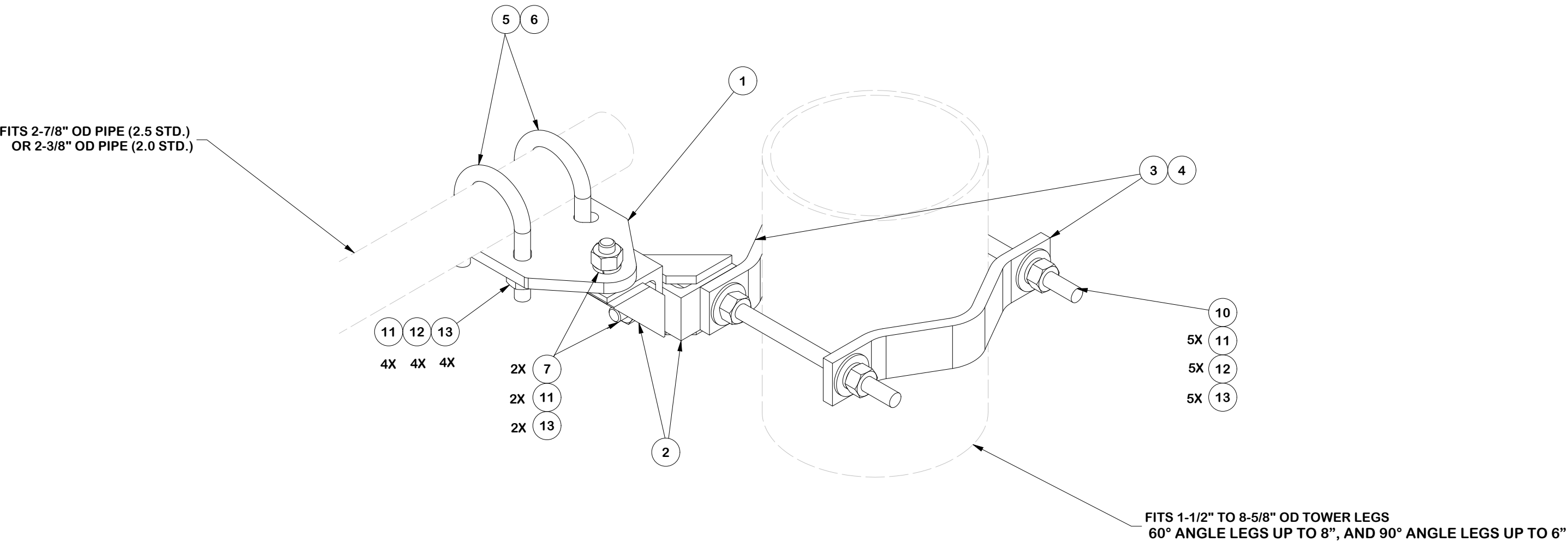


ATTACHMENT 2-3/8" TO 5"  
VERTICAL ORIENTATION

FRONT FACE CONFIGURATIONS

	<div>TOLERANCE NOTES</div> <div>TOLERANCES ON DIMENSIONS, UNLESS OTHERWISE NOTED ARE: SAWED, SHEARED AND GAS CUT EDGES (<math>\pm 0.030''</math>) DRILLED AND GAS CUT HOLES (<math>\pm 0.030''</math>) - NO CONING OF HOLES LASER CUT EDGES AND HOLES (<math>\pm 0.010''</math>) - NO CONING OF HOLES BENDS AND ANGLES ARE <math>\pm 1/2</math> DEGREE ALL OTHER MACHINING (<math>\pm 0.030''</math>) ALL OTHER ASSEMBLY (<math>\pm 0.060''</math>)</div>			<div>DESCRIPTION</div> <div>10' XTREME DUTY V-FRAME ASSEMBLY WITH ONE STIFF ARMS 5' STAND-OFF</div>			<div><div><div>SITE PRO</div><div>1</div></div><div>Engineering Support Team: sp1engineering@valmont.com</div></div> <div>A valmont  COMPANY</div>			PAGE 11 OF 16
	PATENT INFORMATION: WWW.SITEPRO1.COM/PATENTS			CPD NO. SP1	DRAWN BY KS 12/10/2024	ENG. APPROVAL 2/17/2025	PART NO. SPTBU-F			
	PROPRIETARY NOTE: THE DATA AND TECHNIQUES CONTAINED IN THIS DRAWING ARE PROPRIETARY INFORMATION OF VALMONT INDUSTRIES AND CONSIDERED A TRADE SECRET. ANY USE OR DISCLOSURE WITHOUT THE CONSENT OF VALMONT INDUSTRIES IS STRICTLY PROHIBITED.			CLASS 87	SUB 02	DRAWING USAGE CUSTOMER	CHECKED BY JET 2/17/2025	DWG. NO. VFA10-XDS		

PARTS LIST						
ITEM	QTY	PART NO.	PART DESCRIPTION	LENGTH	UNIT WT.	NET WT.
1	1	X-SPTB-U	SLIDING PIPE TIE BACK PLATE	5 1/2 in	5.58	5.58
2	2	X-TBCA	TIE BACK CLIP ANGLE		2.01	4.01
3	2	MCP	CLAMP HALF 1/2" THICK, 11-5/8" LONG	12 1/16 in	3.59	7.19
4	2	DCP	1/2" THICK, 5-3/4" CENTER TO CENTER CLAMP HALF	8 1/8 in	2.36	4.72
5	2	X-UB5258	5/8 X 2-5/8" X 4-1/2" X 2" U-BOLT	4 1/2 in	1.06	2.12
6	2	X-UB5300	5/8" X 3" X 5-1/4" X 2-1/2" U-BOLT	5 1/4 in	1.22	2.43
7	2	G5802	5/8" x 2" HDG HEX BOLT GR5		0.27	0.54
8	2	G5804	5/8" x 4" HDG HEX BOLT GR5		0.44	0.89
9	2	G58R-8	5/8" X 8" THREADED ROD (HDG.)		0.74	1.48
10	2	G58R-12	5/8" x 12" THREADED ROD (HDG.)		1.05	2.09
11	11	G58LW	5/8" HDG LOCKWASHER		0.03	0.29
12	11	G58FW	5/8" HDG USS FLATWASHER	1/8 in	0.07	0.78
13	11	G58NUT	5/8" HDG HEAVY 2H HEX NUT		0.13	1.43
					TOTAL WT. #	33.54



P-SPTBU-B

TOLERANCE NOTES

TOLERANCES ON DIMENSIONS, UNLESS OTHERWISE NOTED ARE:  
SAWED, SHEARED AND GAS CUT EDGES (± 0.030")  
DRILLED AND GAS CUT HOLES (± 0.030") - NO CONING OF HOLES  
LASER CUT EDGES AND HOLES (± 0.010") - NO CONING OF HOLES  
BENDS AND ANGLES ARE ± 1/2 DEGREE  
ALL OTHER MACHINING (± 0.030")  
ALL OTHER ASSEMBLY (± 0.060")

PATENT INFORMATION: WWW.SITEPRO1.COM/PATENTS

PROPRIETARY NOTE:  
THE DATA AND TECHNIQUES CONTAINED IN THIS DRAWING ARE PROPRIETARY INFORMATION OF VALMONT INDUSTRIES AND CONSIDERED A TRADE SECRET. ANY USE OR DISCLOSURE WITHOUT THE CONSENT OF VALMONT INDUSTRIES IS STRICTLY PROHIBITED.

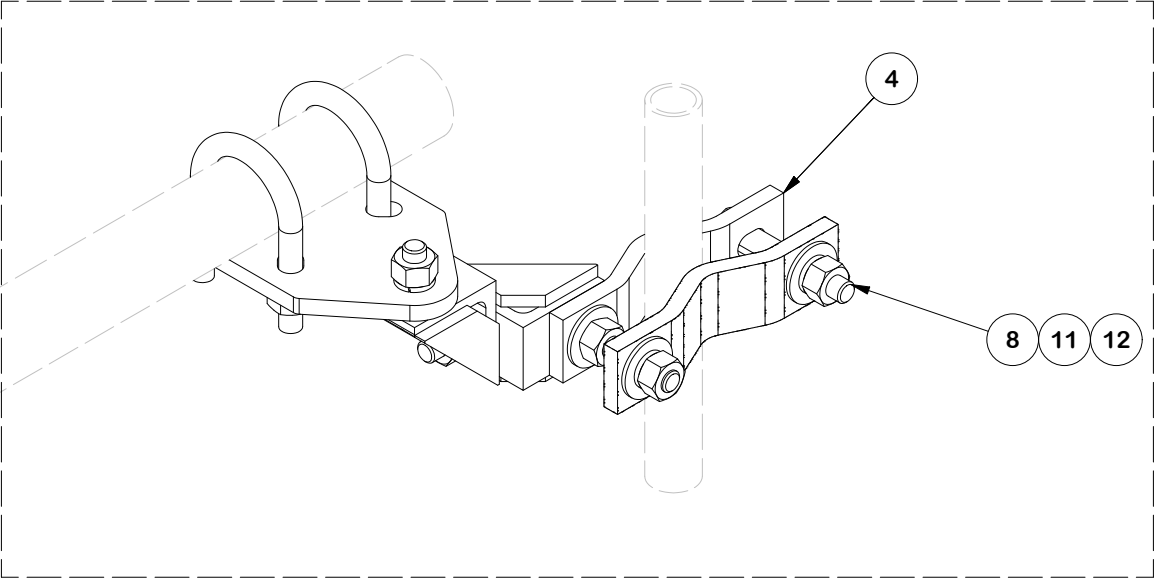
DESCRIPTION  
10' XTREME DUTY V-FRAME ASSEMBLY WITH ONE  
STIFF ARMS 5' STAND-OFF

CPD NO. SP1		DRAWN BY KS 12/10/2024		ENG. APPROVAL 2/17/2025	
CLASS 87	SUB 02	DRAWING USAGE CUSTOMER		CHECKED BY JET 2/17/2025	

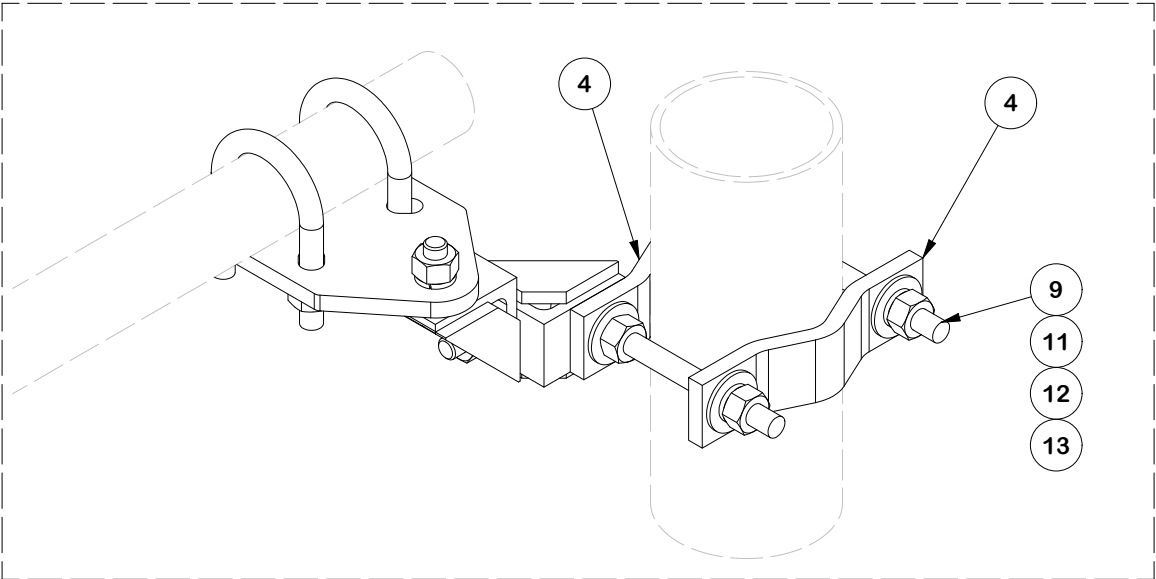


Engineering  
Support Team:  
sp1engineering@valmont.com

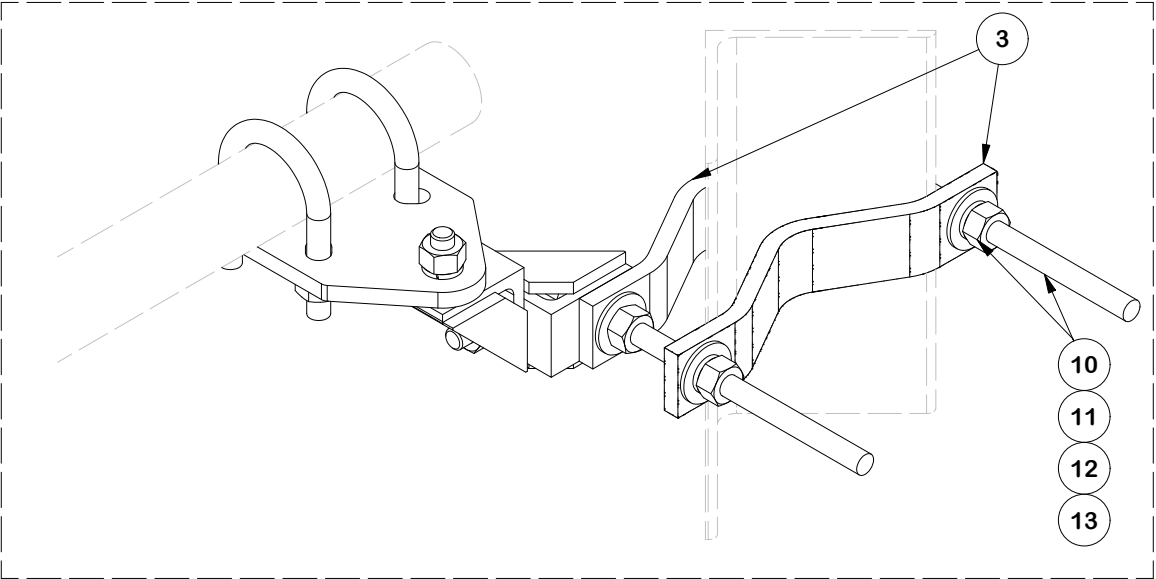
PART NO. SPTBU-B	PAGE 12 OF 16
DWG. NO. VFA10-XDS	



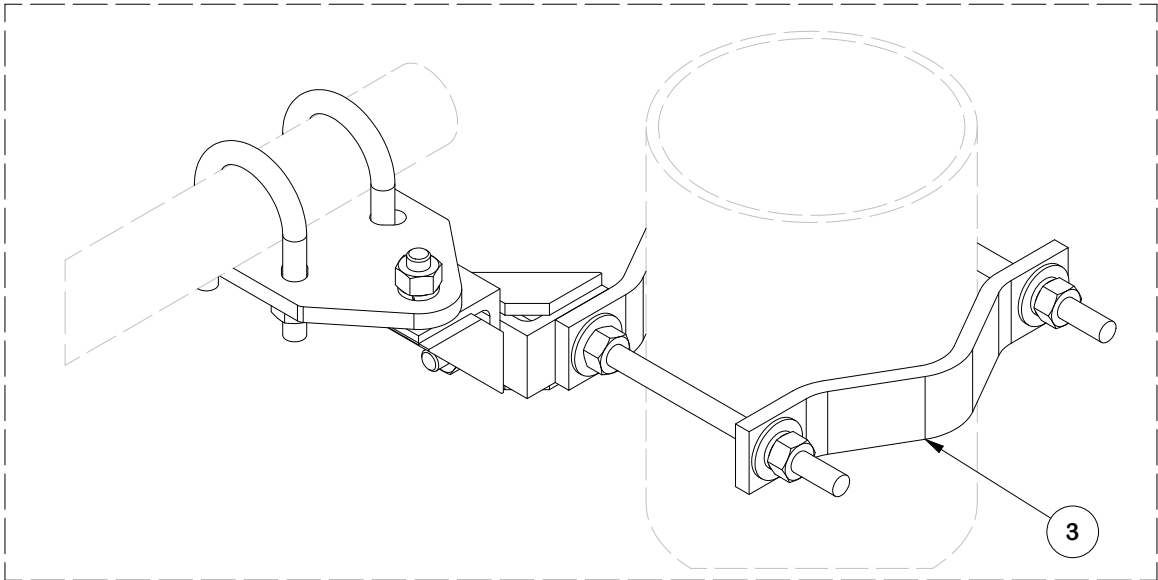
SMALL LEGS 1-1/2" TO 2-3/8"  
NOTE: FLIP HALF BACK CLAMP



MEDIUM LEGS 2-7/8" TO 5"  
NOTE: FLIP HALF BACK CLAMP FOR ANGLE



LARGE LEGS UP TO 6" 90 DEG. 8" 60 DEG  
NOTE: FLIP HALF BACK CLAMP



LARGE LEGS 5" TO 8-5/8" OD

TOWER LEG CONFIGURATIONS

TOLERANCE NOTES

TOLERANCES ON DIMENSIONS, UNLESS OTHERWISE NOTED ARE:  
SAWED, SHEARED AND GAS CUT EDGES ( $\pm 0.030"$ )  
DRILLED AND GAS CUT HOLES ( $\pm 0.030"$ ) - NO CONING OF HOLES  
LASER CUT EDGES AND HOLES ( $\pm 0.010"$ ) - NO CONING OF HOLES  
BENDS AND ANGLES ARE  $\pm 1/2$  DEGREE  
ALL OTHER MACHINING ( $\pm 0.030"$ )  
ALL OTHER ASSEMBLY ( $\pm 0.060"$ )

PATENT INFORMATION: WWW.SITEPRO1.COM/PATENTS

PROPRIETARY NOTE:  
THE DATA AND TECHNIQUES CONTAINED IN THIS DRAWING ARE PROPRIETARY INFORMATION OF VALMONT INDUSTRIES AND CONSIDERED A TRADE SECRET. ANY USE OR DISCLOSURE WITHOUT THE CONSENT OF VALMONT INDUSTRIES IS STRICTLY PROHIBITED.

DESCRIPTION  
10' XTREME DUTY V-FRAME ASSEMBLY WITH ONE  
STIFF ARMS 5' STAND-OFF

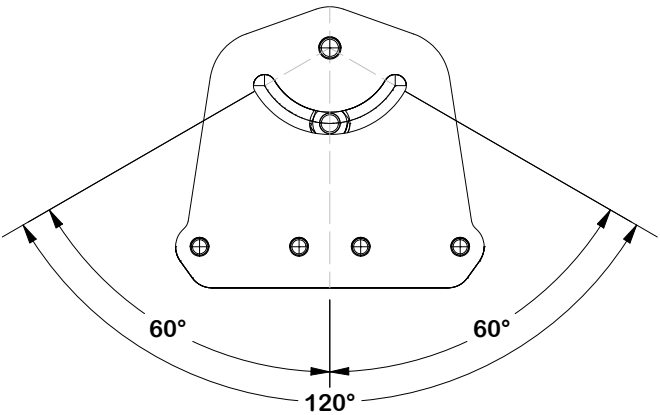
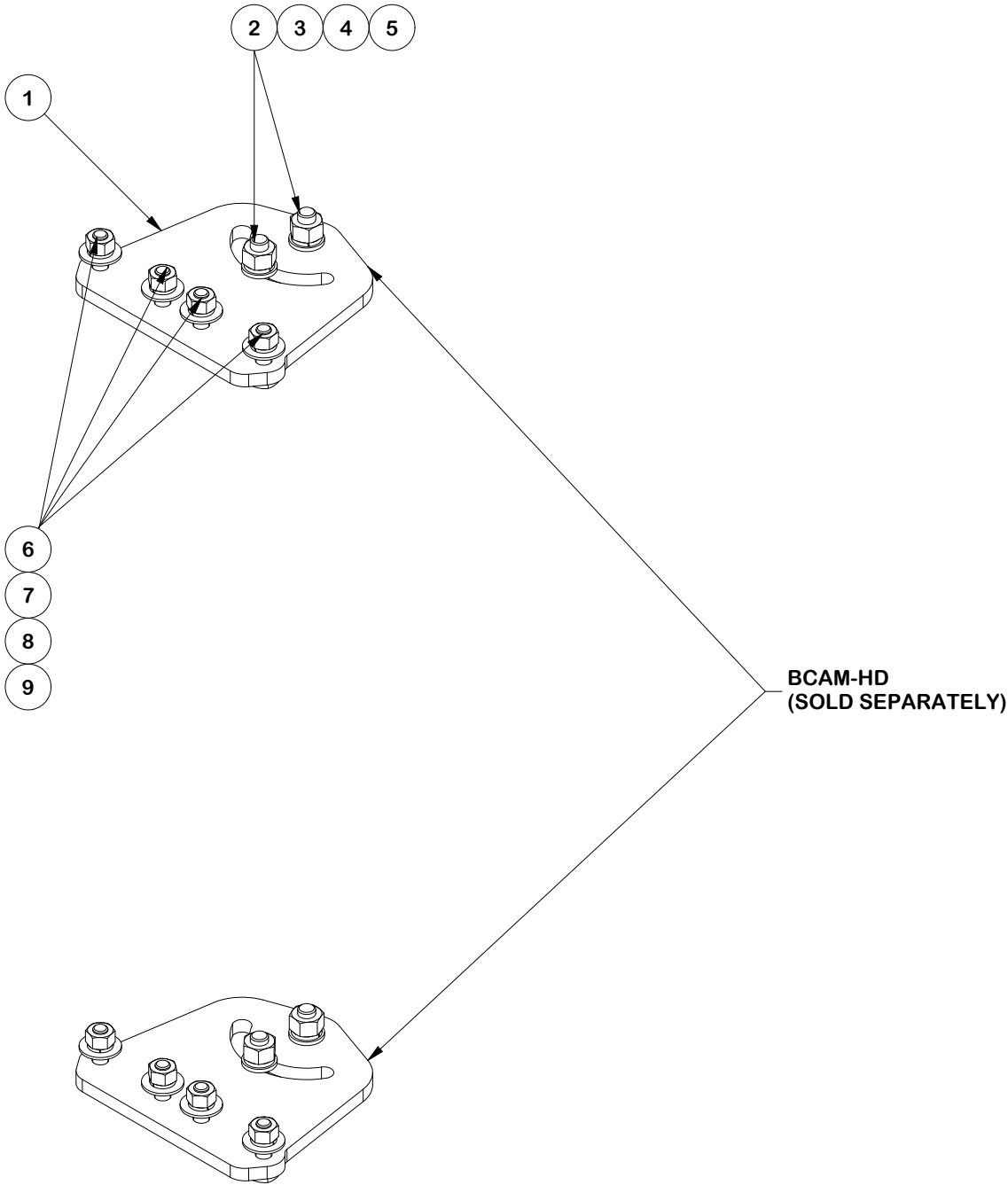
CPD NO. SP1		DRAWN BY KS 12/10/2024		ENG. APPROVAL 2/17/2025	
CLASS 87	SUB 02	DRAWING USAGE CUSTOMER		CHECKED BY JET 2/17/2025	



Engineering  
Support Team:  
sp1engineering@valmont.com

PART NO. SPTBU-B
DWG. NO. VFA10-XDS

PARTS LIST						
ITEM	QTY	PART NO.	PART DESCRIPTION	LENGTH	UNIT WT.	NET WT.
1	2	X-VFAPL4	VFA-HD PIVOT PLATE	12 in	15.88	31.77
2	4	A34212	3/4" x 2-1/2" UNC HEX BOLT (A325)	2 1/2 in	0.48	1.92
3	4	G34FW	3/4" HDG USS FLATWASHER		0.06	0.24
4	4	G34LW	3/4" HDG LOCKWASHER		0.04	0.17
5	4	G34NUT	3/4" HDG HEAVY 2H HEX NUT		0.21	0.85
6	8	A582114	5/8" x 2-1/4" HDG A325 HEX BOLT	2 1/4 in	0.31	2.50
7	8	G58FW	5/8" HDG USS FLATWASHER	1/8 in	0.07	0.56
8	8	G58LW	5/8" HDG LOCKWASHER		0.03	0.21
9	8	G58NUT	5/8" HDG HEAVY 2H HEX NUT		0.13	1.04
TOTAL WT. #						39.25



PIVOT RANGE

FINISH:  
HOT DIP GALVANIZED.

TOLERANCE NOTES

TOLERANCES ON DIMENSIONS, UNLESS OTHERWISE NOTED ARE:  
SAWED, SHEARED AND GAS CUT EDGES ( $\pm 0.030"$ )  
DRILLED AND GAS CUT HOLES ( $\pm 0.030"$ ) - NO CONING OF HOLES  
LASER CUT EDGES AND HOLES ( $\pm 0.010"$ ) - NO CONING OF HOLES  
BENDS AND ANGLES ARE  $\pm 1/2$  DEGREE  
ALL OTHER MACHINING ( $\pm 0.030"$ )  
ALL OTHER ASSEMBLY ( $\pm 0.060"$ )

PATENT INFORMATION: WWW.SITEPRO1.COM/PATENTS

PROPRIETARY NOTE:  
THE DATA AND TECHNIQUES CONTAINED IN THIS DRAWING ARE PROPRIETARY INFORMATION OF VALMONT INDUSTRIES AND CONSIDERED A TRADE SECRET. ANY USE OR DISCLOSURE WITHOUT THE CONSENT OF VALMONT INDUSTRIES IS STRICTLY PROHIBITED.

DESCRIPTION  
10' XTREME DUTY V-FRAME ASSEMBLY WITH ONE  
STIFF ARMS 5' STAND-OFF

CPD NO. SP1		DRAWN BY KS 12/10/2024	ENG. APPROVAL 2/17/2025
CLASS 87	SUB 02	DRAWING USAGE CUSTOMER	CHECKED BY JET 2/17/2025

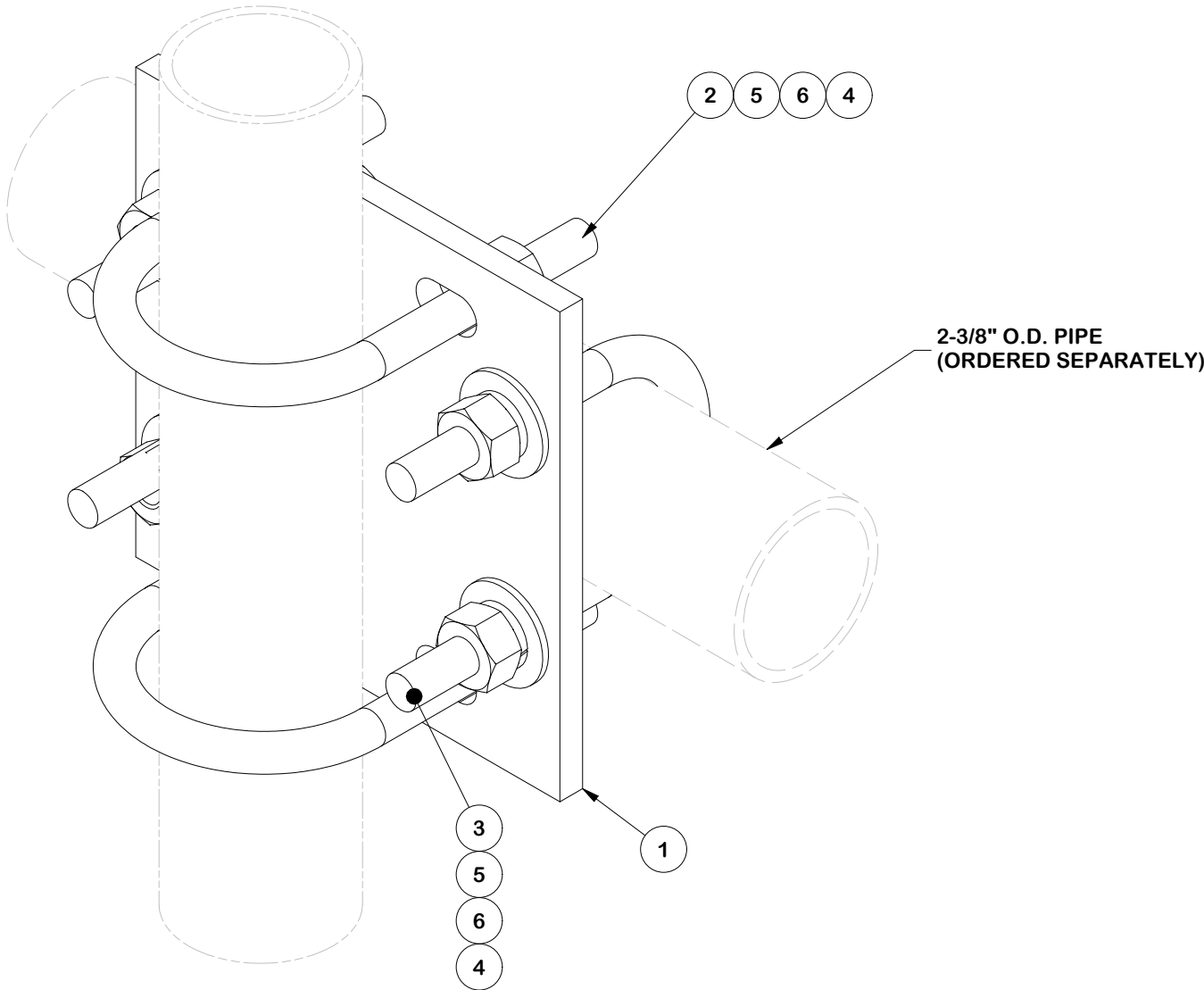


Engineering  
Support Team:  
sp1engineering@valmont.com

PART NO. VFAPL4-K	PAGE 14 OF 16
DWG. NO. VFA10-XDS	



PARTS LIST						
ITEM	QTY	PART NO.	PART DESCRIPTION	LENGTH	UNIT WT.	NET WT.
1	1	SCX2	CROSSOVER PLATE	7 in	5.08	5.08
2	2	X-UB1300	1/2 X 3" X 5" X 2" U-BOLT	5 in	0.74	1.48
3	2	X-UB1212	1/2" X 2-1/2" X 4-1/2" X 2" U-BOLT	4 1/2 in	0.66	1.32
4	8	G12NUT	1/2" HDG HEAVY 2H HEX NUT	7/8 in	0.07	0.57
5	8	G12FW	1/2" HDG USS FLATWASHER	3/32 in	0.03	0.27
6	8	G12LW	1/2" HDG LOCKWASHER	1/8 in	0.01	0.11
					TOTAL WT. #	8.84



TOLERANCE NOTES

TOLERANCES ON DIMENSIONS, UNLESS OTHERWISE NOTED ARE:  
SAWED, SHEARED AND GAS CUT EDGES ( $\pm 0.030''$ )  
DRILLED AND GAS CUT HOLES ( $\pm 0.030''$ ) - NO CONING OF HOLES  
LASER CUT EDGES AND HOLES ( $\pm 0.010''$ ) - NO CONING OF HOLES  
BENDS ARE  $\pm 1/2$  DEGREE  
ALL OTHER MACHINING ( $\pm 0.030''$ )  
ALL OTHER ASSEMBLY ( $\pm 0.060''$ )

PROPRIETARY NOTE:  
THE DATA AND TECHNIQUES CONTAINED IN THIS DRAWING ARE PROPRIETARY INFORMATION OF VALMONT INDUSTRIES AND CONSIDERED A TRADE SECRET. ANY USE OR DISCLOSURE WITHOUT THE CONSENT OF VALMONT INDUSTRIES IS STRICTLY PROHIBITED.

DESCRIPTION		
10' XTREME DUTY V-FRAME ASSEMBLY WITH ONE STIFF ARMS 5' STAND-OFF		

CPD NO.	DRAWN BY	ENG. APPROVAL
SP1	KS 12/10/2024	2/17/2025
CLASS	DRAWING USAGE	CHECKED BY
87	CUSTOMER	JET 2/17/2025

SITE PRO 1

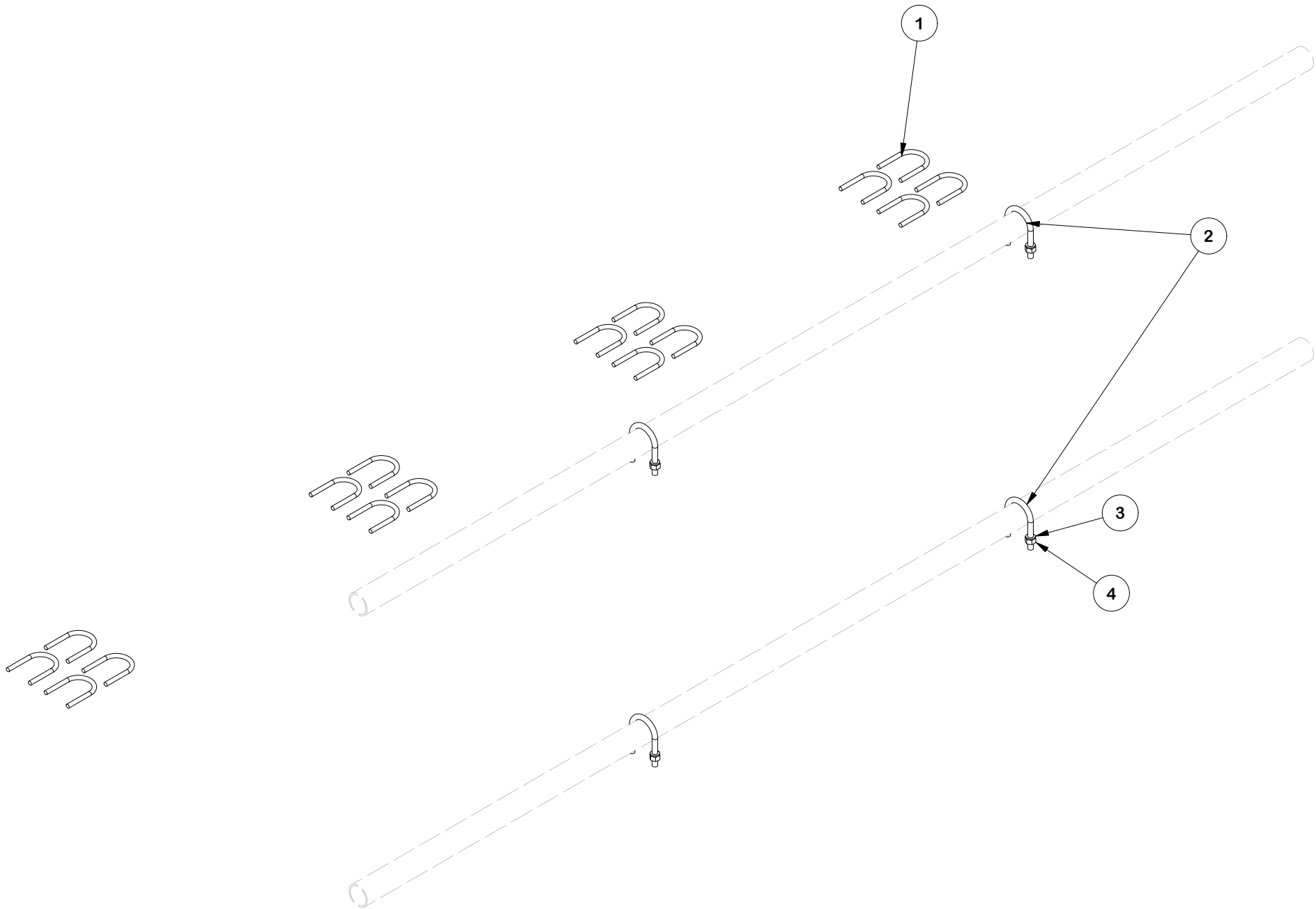
A valmont COMPANY

Locations:  
New York, NY  
Atlanta, GA  
Los Angeles, CA  
Plymouth, IN  
Salem, OR  
Dallas, TX

Engineering  
Support Team:  
1-888-753-7446

PART NO.	SCX2-K	15 OF 16 PAGE
DWG. NO.	VFA10-XDS	

PARTS LIST					
ITEM	QTY	PART NO.	PART DESCRIPTION	LENGTH	UNIT WT.
1	16	X-UB1300	1/2 X 3" X 5" X 2" U-BOLT	5 in	0.74
2	4	X-UB5300	5/8" X 3" X 5-1/4" X 2-1/2" U-BOLT	5 1/4 in	1.22
3	8	G58LW	5/8" HDG LOCKWASHER		0.03
4	8	G58NUT	5/8" HDG HEAVY 2H HEX NUT		0.13
TOTAL WT. #					17.93



TOLERANCE NOTES

TOLERANCES ON DIMENSIONS, UNLESS OTHERWISE NOTED ARE:  
SAWED, SHEARED AND GAS CUT EDGES ( $\pm 0.030"$ )  
DRILLED AND GAS CUT HOLES ( $\pm 0.030"$ ) - NO CONING OF HOLES  
LASER CUT EDGES AND HOLES ( $\pm 0.010"$ ) - NO CONING OF HOLES  
BENDS AND ANGLES ARE  $\pm 1/2$  DEGREE  
ALL OTHER MACHINING ( $\pm 0.030"$ )  
ALL OTHER ASSEMBLY ( $\pm 0.060"$ )

PATENT INFORMATION: WWW.SITEPRO1.COM/PATENTS

PROPRIETARY NOTE:  
THE DATA AND TECHNIQUES CONTAINED IN THIS DRAWING ARE PROPRIETARY INFORMATION OF VALMONT INDUSTRIES AND CONSIDERED A TRADE SECRET. ANY USE OR DISCLOSURE WITHOUT THE CONSENT OF VALMONT INDUSTRIES IS STRICTLY PROHIBITED.

DESCRIPTION  
10' XTREME DUTY V-FRAME ASSEMBLY WITH ONE  
STIFF ARMS 5' STAND-OFF

CPD NO. SP1		DRAWN BY KS 12/10/2024	ENG. APPROVAL 2/17/2025
CLASS 87	SUB 02	DRAWING USAGE CUSTOMER	CHECKED BY JET 2/17/2025



Engineering  
Support Team:  
sp1engineering@valmont.com

PART NO. VFAHD-FACEHW	PAGE 16 OF 16
DWG. NO. VFA10-XDS	